

Volume No. 29,
Monday 12th,
April 1993.
PRICE £1.20



BLUES News

INSIDE *Today's Issue*



**IT'S SAVILLE AGAIN,
BUT BLUES LOOSE
TO WEST HAM UTD.**

Report & Pictures inside

PLUS

- PREVIEW OF TODAY'S MATCH - BARCLAYS LEAGUE DIVISION 1 - BLUES v SWINDON TOWN KICK-OFF 3.00P.M.
- YOUR JOURNEY TO WATFORD MADE EASY WITH OUR ON-TOUR GUIDE
- HOT-SHOT ANDY SAVILLE IN THE SPOTLIGHT
- PLUS ALL THE NEWS AND VIEWS FROM INSIDE THE CLUB.



BARCLAYS



The Official Birmingham City Matchday Magazine
Sponsored by Birmingham Car Auctions 1986 Ltd

Ed - START

THANKS TO THE OFFICIAL SPONSORS OF BLUES NEWS ... BIRMINGHAM CAR AUCTIONS 1986 LTD

Suppliers of Cars to
Birmingham City F.C.



302-312 Moseley Road,
Highgate, Birmingham B12 0BS

Auctions on
Tuesdays and Thursdays
at 6.30p.m.
Saturdays at 12.00 noon.

Approx. 500 vehicles a week
Telephone: 021 446 4000

WHY, OH WHY, OH WHY

Why does the last five minutes last an hour when you are winning, and ten seconds when you are losing?

And why do referees never play any injury time when you are losing, whilst adding on ten minutes when you are hanging on?

J. Stephenson, Erdington

Why don't they hold all the F.A. Cup third round matches at Wembley next season?

Don, Bromsgrove

Why are away wins so much more satisfying than home wins?

Away traveller

Send your "Why, oh why, oh why" entries to the normal address, and we'll print the best ones.



BIRMINGHAM CITY FOOTBALL CLUB PLC

St. Andrews Ground,
Birmingham B9 4NH

Tel: 021 772 0101

Shop: 021 766 8274

Fax: 021 766 7866

Community: 021 766 6180

Clubcall: 0898 12 11 88

Ticket & Competition line: 0891 332 988

Directors:

J. F. WISEMAN (Chairman)
KARREN BRADY (Managing Director)
D. SULLIVAN, ALAN JONES,
T. COOPER, B. H. SLATER

Team Manager

TERRY COOPER

Secretary

ALAN JONES

Youth Team Coach

TONY TAYLOR

Physiotherapist

PAUL HEATH

Who's Who at St ANDREWS?

Head of Marketing/ Commercial Manager

MARK BOWLER

Promotions Manager

SIMON WARD

Accounts Office Manager

MARIAN WILMOTT

Assistant to Commercial Manager

JEAN DEELEY

Shop/Lottery Manager

MARK HULME

Head Groundsman

BRIAN HARRIS

Community Officer

DEREK CLYDESDALE

Safety Officer

DAVID PYKE

Honorary Medical Officer

DR D.N. WATSON M.B. Ch.B.

Honorary Club Chaplain

REV. KEN HAWKINGS

BLUES NEWS MATCHDAY MAGAZINE

Editor: Simon Ward.

Official club photographer: Paul J. Lennon L.M.P.A.

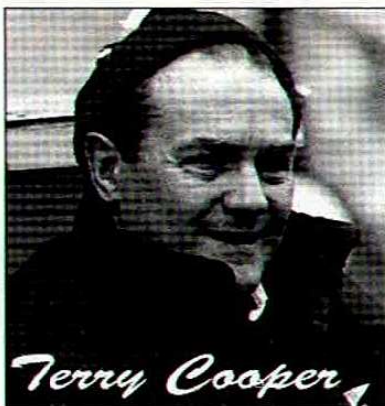
Action shots: Jim Weaver

Published by: Birmingham City Football Club

Designed, printed and finished by Windmill Print & Design

All views expressed in the magazine are not necessarily those of the Football Club unless stated

"Last nights game against Derby was a test of character which we came through"



"It's disappointing that we find ourselves back in the relegation zone, but it's our own fault"

I'd like to start my notes by saying, thank you for the support over recent weeks. However we should have had more points in the bag before we enter our last six games.

Going back to the Newcastle game, I believe the three points should have been ours although a draw was a great result. However against West Ham, a game which we controlled for the main part was given away by pushing so far forward and leaving ourselves exposed at the back.

Although we are playing some of our best football all season it is not going to help our cause if we don't start winning matches immediately.

Last nights game against Derby was a test of character which we came through and in the

On *Reflection*

end could possibly have got the extra two points that we so desperately need.

After falling behind we kept on scrapping in midfield and chances were created. The only amazing part is that it took us eighty minutes to convert one of those chances and it proved a little too late for an attacking surge which never really came.

I thought Darren Rogers was a little bit unfortunate to be dismissed towards the end, but if the referee wants to interpret the challenge as a

professional foul, then there is no other option, but to send the player off.

Richard Scott settled in on his debut and looks a very good prospect for the future, and both James Quinn and Graham Potter were there for me to pick as squad players after I found myself unlucky once again with injury.

It's disappointing that we find ourselves back in the relegation zone, but it's our own fault and we've got to once again, get ourselves out of our own mess.

Hopefully we will gain three points at Sunderland and three from todays game, although it will be tough as Swindon are a very good passing side and will still be looking for an automatic promotion spot.

Enjoy todays game

Terry

Blues *in* ACTION

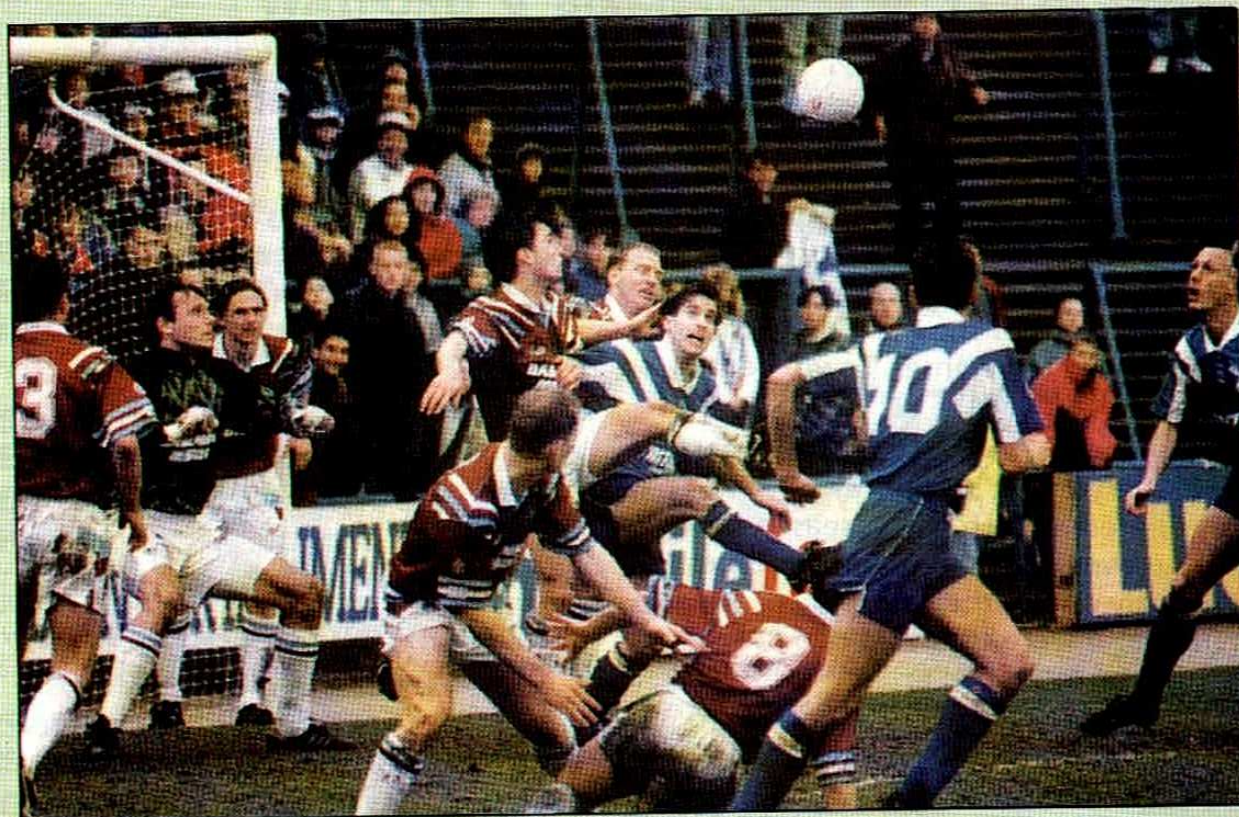
THE ONE THAT WAS



ANDY SAVILLE (out of picture) heads Blues into the lead against West Ham United - Paul Moulden to Dean Peer make sure.

Versus **WEST HAM UTD**

.... AND ONE THAT GOT AWAY



TREVOR MATTHEWSON waits for the loose ball to come down, but only manages find hit the 'keeper from six yards out.

That was THE YEAR seen thru

1950

by Tony Matthews

1949-50 was not a good season for Blues. They finished bottom of the First Division, had one of their worst scoring campaigns for years (only 31 goals in 43 competitive matches), won just seven games (one away) and lost 34. They even went out of the F.A. Cup in the Third Round to Swansea Town, beaten 3-0 in South Wales.

After taking 17th place the previous term everyone at St. Andrews had anticipated a much better season in '49-50. But everything went wrong. Blues won only one of their first 18 League games and were firmly dmped at the bottom of the table.

They never really recovered and went crashing through the trap-door with Manchester City, after gaining a mere 28 points (out of 84).

They never scored more than two goals in a game and indeed best victory was 2-0 - against W.B.A. and Charlton (both at home) and Manchester United (away). They were hammered 6-1 by Wolves at Molineux on the last day of the season and 4-0 at Manchester City and 4-1 at Derby. Jim Dailey top-scored with nine goals; Bobby Brennan netted seven.



Jim Dailey

Yet surprisingly despite their mediocre form, Blues averaged a staggering 34,310 at home matches, with a best 50,027 watching the local derby with Albion.

Not a season to remember - hey?

SOCCER HONOURS (1950)

- First Division champions - Portsmouth (retained prize)
- Second Division champions - Tottenham Hotspur
- Third Division (S) champions - Notts County
- Third Division (N) champions - Doncaster Rovers
- F.A. Cup winners - Arsenal (2-0 v. Liverpool)
- Scottish League champions - Rangers
- Scottish F.A. Cup winners - Rangers (3-0 v. East Fife)
- Scottish League Cup winners - East Fife (3-0 v. Dunfermline)
- World Cup winners - Uruguay

THE SPORTING WORLD (1950)

- ◆ World Heavyweight Boxing champion - Ezzard Charles
- ◆ British Heavyweight champion - Jack Gardner
- ◆ County Cricket champions - Lancashire/Surrey (joint)
- ◆ World Darts champion - Dave Newberry (Great Britain)
- ◆ British Open Golf champion - Bobby Locke (South Africa)
- ◆ U.S. Open Golf champion - Ben Hogan (U.S.A.)
- ◆ Epsom Derby winner - Galcador (Rae Johnstone 100-9)
- ◆ Grand National winner - Freebooter (J. Power 10-1)
- ◆ World Motor racing champion - G. Farina (Italy, Alfa Romeo)
- ◆ Singles champions Wimbledon - Budge Partty/Louise Brough

AROUND THE WORLD (1950)

- 10th February - Mark Spitz, the ace American Olympic swimmer, was born in Modesto, California
- 19th March - Edgar Rie Burroughs, creator of Tarzan, died aged 74
- 26th May - petrol rationing came to an end in Britain after ten years
- 7th June - the B.B.C. broadcast the first episode of The Archers
- 25th June - The Korean War started when the North invaded the South
- 15th August - Princess Anne, the second child of Princess Elizabeth, was born



HERE ARE THE TICKET DETAILS FOR BLUES' REMAINING MATCHES:

Saturday 17th April 1993
Barclays League Division 1
WATFORD v BIRMINGHAM CITY
Kick-off 3.00p.m.

THIS IS NOT AN ALL-TICKET MATCH. HOWEVER, SEATS ARE ALL-TICKET, WE HAVE 337 AT £10.00 EACH. ON SALE TO SEASON TICKET HOLDERS/TRUE BLUE CLUB MEMBERS NOW; TO BLUES SOCIETY MEMBERS FROM MONDAY 12TH APRIL.

Saturday 24th April 1993
Barclays League Division 1
BIRMINGHAM CITY v TRANMERE ROVERS
Kick-off 3.00p.m.

Normal admission prices and details apply

Saturday 1st May '93
Barclays League Division 1
BRISTOL ROVERS v BIRMINGHAM CITY
Kick-off 3.00p.m.

THIS IS AN ALL-TICKET MATCH. TERRACE ONLY. 1,000 TICKETS AVAILABLE, PRICE £6.50. ON SALE TO SEASON TICKET HOLDERS AND TRUE BLUE CLUB MEMBERS FROM NOW; TO BLUES SOCIETY MEMBERS FROM MONDAY 12TH APRIL; ON GENERAL SALE FROM MONDAY 19TH APRIL. STRICTLY ONE TICKET PER SEASON TICKET, TRUE BLUE CARD OR MEMBERSHIP CARD.

Saturday 8th May '93
Barclays League Division 1
BIRMINGHAM CITY v CHARLTON ATHLETIC
Kick-off 3.00p.m.

Normal admission prices and details apply.

TICKETS ARE NOW ON SALE FOR ALL BLUES REMAINING HOME MATCHES, SO BUY EARLY TO AVOID DISAPPOINTMENT.

YOUR FOOTBALL CLUB NEEDS YOU!

**Birmingham City need male
and female Stadium
Stewards, and Turnstile
Operators.**

Application forms can be
obtained from the Club
reception at the Main Office.
Alternatively, call Safety Officer
David Pyke.

Applicants should be aged
between 18-55 years, fit, active
and robust, and of good
character. They should be
prepared to attend at least 70%
of First Team home matches.

Full training will be given.



CONGRATULATIONS TO SCOTT HILEY, WHO WAS RECENTLY VOTED INTO THE P.F.A. DIVISIONAL REPRESENTATIVE SIDE FOR DIVISION 2. SCOTT IS PICTURED RECEIVING HIS AWARD FROM ALEX PATTERSON, OF BARCLAYS BANK.

NEWS

in the



.....▶

BECOME A TRUE BLUE MEMBER

◀.....

With Blues recent surge in form, and more people coming to home matches now, we are getting quite a few enquiries as to what the True Blue Club is all about.

So with apologies to our members, here's what we do:

- Our basic aim is to raise money for Terry Cooper to buy players. We bought Paul Peschisolido for £33,000 for example, and only last week we contributed £15,000 towards the cost of Andy Saville.
- At the same time, we give away excellent cash prizes, ranging from a £400 weekly prize, to a £2,500 annual prize. In our current year we will give in excess of £38,000 back to our members through prize money.
- The cost is £2 per week, which you can pay via cash, credit card or standing order through your bank.
- Members get top priority for all-ticket matches, as long as they are paid up to date.

For further details and an application form, call Simon on 021 772 0101. And help Terry to build a squad to be proud of.

EXISTING MEMBERS:

Don't forget, to use your club benefits you will need a new "2nd season" membership.

Pick yours up from the club offices now.

THE BLUES SOCIETY	
	
Name	_____
Membership Number	_____

Latest winners:-

WEEK 19

£400 - A.J. Watkins (1107)

£10 - 0623, 0768, 0167, 0893, 0582, 0652, 0566, 0493, 0758, 0385

WEEK 20

£400 - R.E. Parfitt (0266)

£10 - 0425, 0342, 0899, 0105, 0558, 0244, 0807, 0685, 0548, 1109

Terrace ALK...

One of the problems with club programmes is that inevitably, copy is sometimes a little out-of-date, particularly around holiday periods. Since I wrote these notes, Blues have played two matches, against Derby and Sunderland, and obviously, the outcome of these matches are crucial to our hopes of staying up.

Against West Ham after a bright opening and an excellent goal from Andy Saville, Blues seemed able to keep West Ham at bay and although they enjoyed a great deal of possession, they rarely threatened our goal. Unfortunately, we failed to capitalise on several second half chances, and the rest is history. A terrible disappointment and yes, a travesty, but hopefully we've bounced back as there were many more plus points to emerge.

With Blues final away game at Bath, we will again face the problem of an allocation of only 1,000 tickets. It was therefore extremely disconcerting to see Midland Entertainment advertising in the Sports Argus packages which include a match-ticket. If these tickets have been supplied by the club, I trust the same rules apply i.e. on sale to Season-ticket holders and True Blue Club members first, followed by Blues Society members. It would be a slap in the face if one rule applied to the vast majority of supporters and another to those able to afford the £38 package on offer from Midland Entertainment.

Blues fans reading Karren Brady's column in the West Ham programme may have been surprised to learn that we now need gates of 18,000 to break even. The debts are colossal but the new regime have pledged their support and no-one with the exception of the usual cynics doubts their commitment and motives. But it's now up to the armchair Blues fans to get off their backsides and start actively supporting the club. The previous chairman was often accused of a lack of ambition, but I know he was extremely disappointed at the large numbers of fans who stayed away.

Blues have a very loyal hard core of supporters, as good as any in the country, but the hooligan element has dragged us down, whilst too many others wanted a day out at Wembley and little else. There is now **NO EXCUSE** for staying away. As long as the club treats us fairly over season-ticket and admission prices for next season, with concessions for the unemployed etc., then the onus is on Blues fans to support the club in large numbers. In a recession many unfortunately find it financially impossible to attend, but too many others are the club's loudest critics without actually setting foot anywhere near St. Andrews.

Ivor Crigman

Calling all Blues Fans

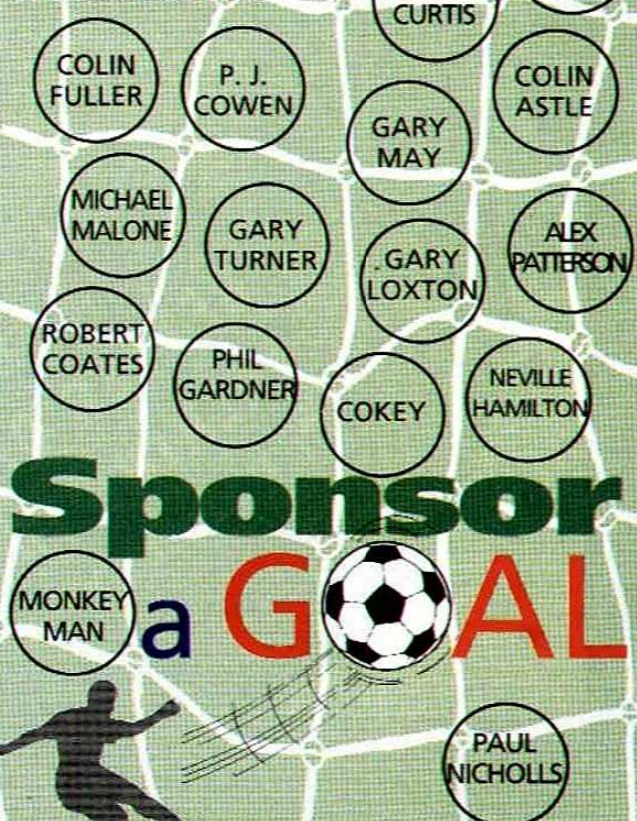
Ever Wanted to Support the Blues Financially, but found normal Sponsorship Prices out of reach?

Blues Sponsor a Goal Scheme.

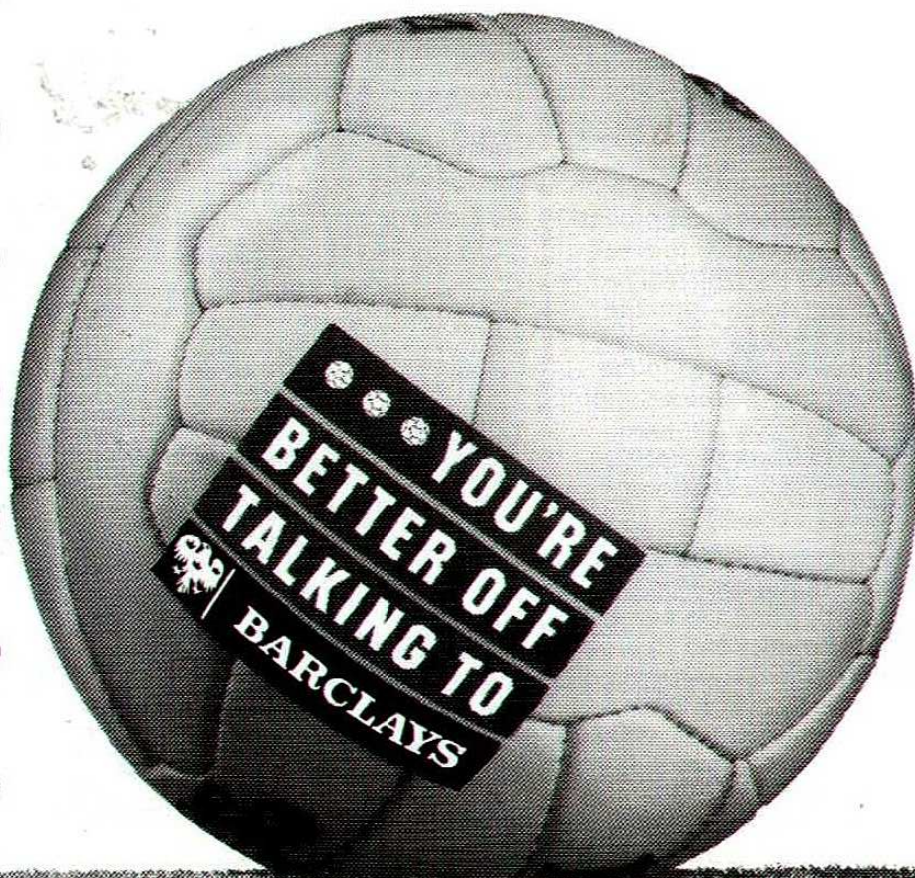
- 👉 Help the Blues for as little as 25p per Goal.
- 👉 See your name in the new Blues News Weekly Magazine on a regular basis.
- 👉 Enter our Prediction Competition.
- 👉 Join your fellow Sponsors at an End-of Season Buffet and Prize Raffle.
- 👉 Be Presented with a Certificate signed by the Manager and Players.

All you have to do is collect a form from the Club Offices, and return it to Mark Bowler or David Teague. We'll invoice you at the beginning of December and the beginning of May. No payment cards, no callers, no Worries.

THANKS TO OUR GOAL SPONSORS SO FAR!



Whatever your
goal...



INTERVIEWS & MATCH COMMENTARY 0891 12 11 88

BLUES
News

40 YEARS AGO - April 1953

Blues lost 2-1 at home to Blackburn Rovers in a Second Division match; Geoff Cox their scorer in front of 20,000 fans - this being their third reverse in four starts.

Swindon Town, battling away in the bottom four, beat promotion-chasing Northampton 3-0 at home in a Third Division (S) match which attracted a crowd of around 8,000 to The County Ground.

30 YEARS AGO - April 1963

Two goals by Welsh international Ken Leek gave Blues a 2-0 win at Nottingham Forest in the First Division. There were just 15,575 fans present at The City ground to see Blues' first win in thirteen matches as they struggled to climb away from the relegation zone.

Swindon Town lost 3-2 at home to Peterborough United in a Third Division match just 24 hours after hammering Colchester United 6-1 on the same ground. But this defeat didn't prevent the 'Robins' from gaining promotion!

20 YEARS AGO - April 1973

Blues won a First Division match by 1-0 at Leicester thanks to Alan Campbell's goal. There were over 27,600 fans present to witness a fourth successive victory for Freddie Goodwin's team.

A crowd of under 8,500 saw Swindon Town draw 0-0 at Millwall in a Second Division match. At the time Swindon were finding it mighty hard to score - only six goals in eight games.

10 YEARS AGO - April 1983

Blues went down 3-1 to Luton Town at Kenilworth Road where the crowd was almost 13,000.

Robert Hopkins, now with Roy McDonough at Colchester, scored our goal.

Swindon lost a seven-goal thriller at London Road against Peterborough. It was a pity that only 2,522 hardy souls turned out for this contest in which 'Posh' led 4-1 at half-time. Paul Rideout was among the Swindon scorers.

Captain's LOG

The West Ham game was a huge disappointment for the lads, after holding out for so long it was a cruel blow to lose two goals in the last five minutes. The standard of football is getting better and we really are starting to gel together as a team.

The support has been tremendous the last few games, keep behind us and we won't let anybody down.

The Derby game saw a few changes in the side, young Richard Scott came in for his first senior game and he overcame the nerves to put in a steady performance. Derby have had an excellent away record and considering the forced team changes the lads worked hard to get the point.

It was a team effort but special praise must be given to George for his non-stop

work rate and tough tackling, again, the team showed their character, if we can keep that up together with your support we won't let anybody down.

Today we face Glenn Hoddle's Swindon, who are an attractive footballing side. However, I believe that if we can play to the best of our potential, then we should come away with a very valuable 3 points, which we have probably deserved over the last couple of matches.

Hopefully, the injury situation will improve and we can climb out of our present position!



John

Kiddies..... CORNER

Welcome again, and we all hope that you had a nice Easter.

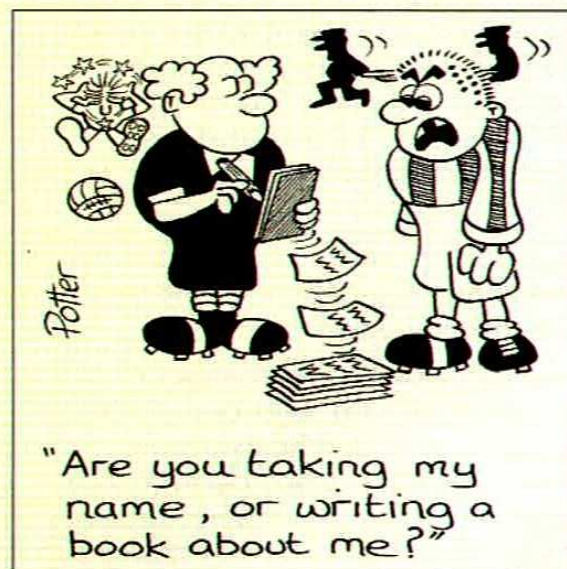
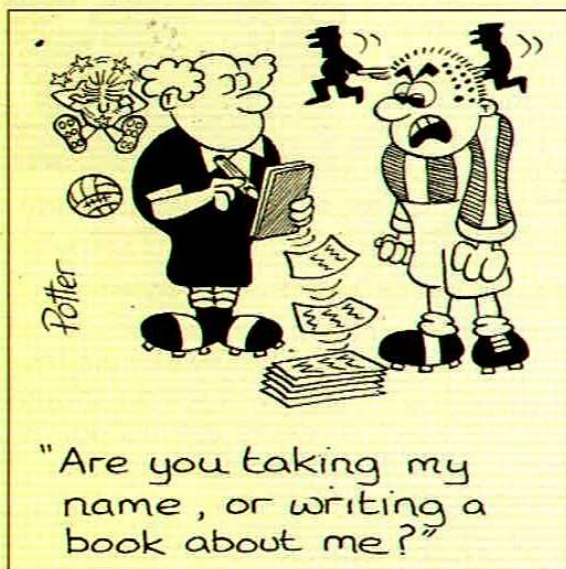
We'll begin with a wordsearch this week, and ask you to find the names of thirteen football league grounds in the grid below.

Can you spot them all?

A	B	E	L	A	D	P	E	E	D	A	M
R	K	C	L	F	T	J	D	P	D	U	Q
O	G	R	I	F	F	I	N	P	A	R	K
O	S	M	M	O	G	E	P	V	I	I	N
M	U	I	D	A	T	S	Y	E	B	B	A
F	E	L	L	T	C	N	A	T	K	E	B
R	O	L	E	O	L	W	H	B	R	L	L
U	N	M	I	C	H	E	S	K	A	L	I
T	F	O	F	S	D	R	E	X	P	E	C
R	J	O	Q	E	S	H	H	Z	M	V	I
G	T	R	N	B	Y	M	T	L	L	V	I
M	E	A	D	O	W	L	A	N	E	E	S

GRIFFIN PARK
ABBEY STADIUM
MEADOW LANE
THE DEN
SINCIL BANK
TURF MOOR
FIELD MILL
DEEPALE
MILLMOOR
ELM PARK
BELLE VUE
THE SHAY
BESCOT

And here's a spot the difference cartoon, can you find ten differences between the pictures?



answers: 1. Player in background - studs missing from boots 2. Stripe on ref's boot narrower 3. Line on second piece of paper missing 4. Ambulance man's leg missing 5. Player's tooth missing 6. Dot on side of player's head missing 7. Stripes on player's shirt colours swapped 8. Player's hand missing 9. Stud missing from player's boot 10. Ref's collar missing

Good afternoon to you all, I hope that everyone had a pleasant Easter with not too many Easter eggs!

Today we welcome our visitors from Swindon Town and I hope that you all have a great time with us.

WATFORD - AWAY

This trip is now fully booked, the departure time is 9.00a.m. and we will be playing football in a park, so please bring your boots and shinpads.

BRISTOL ROVERS

Bookings will be taken today for this trip - please note that we will be standing in their Family Enclosure and the cost will be £9.00 per head. Please see Ian to book your place.

Departure time will be printed in our Tranmere programme.

PLAYER OF THE YEAR

Voting forms are now available, please fill one in and give it to a committee member.

A date is yet to be announced regarding the presentation dance.

BIRTHDAY COMPLIMENTARY TICKETS

Up to today's game, I have not been able to meet with our new Managing Director, Karren Brady, to discuss the complimentary ticket situation.

I know that some of you are still waiting to receive your Birthday Ticket, so please bear with me and as soon as I have had a meeting with Karren, I will hopefully be able to send one out to you.

Many thanks for your patience in this matter.

JUNIOR BLUES SEASON '93/4

I have been asked whether the Junior Blues will still be functioning next season by many of the parents and children.

Again, at this point in time, the matter is still in the hands of our new owners.

Like yourselves, I sincerely hope that we are in a position to continue as a lot of hard work and commitment has been put into the Junior Blues, both by the committee and the parents and children, and it would be a pity if we were not able to carry on.

Please keep giving us your support

EASTER EGG DRAW

Are you the lucky winner?

The winning number will be drawn out in the rooms at about 2.15p.m. with a presentation on the pitch at half-time.

If you haven't bought your ticket, do so now!

**Enjoy the game,
and see you next time**

Rita

Junior
..... **BLUES**

THERE'S ONLY ONE MITRE DELTA...
...ONE MITRE DELTA.
THERE'S ONLY
ONE MITRE
DELTA...

mitre
International Excellence

Mitre Sports International Ltd., Bay Hall Works, Birkby, Huddersfield, West Yorkshire HD1 5AJ. Tel: (0484) 537488 Fax: (0484) 530042

BLUES NEWS

TICKET INFORMATION & COMPETITION LINE 0891 332 988

1101

CommunityBLUES

SOCCER SCHOOLS

During the course of the first week of the Easter holidays, we have run several very successful soccer schools. These courses were based at:

SIMON DIGBY SCHOOL, KINGS HEATH BOYS SCHOOL,
TUDOR GRANGE, THE NORMAN GREEN CENTRE.

We attracted to these respective centres 60, 80 and 94 children. Each child received a football and two tickets for a home match as well as several days of enjoyable coaching.

A reminder of the courses taking place on the second week:

- VENUE: Simon Digby School, Chelmsley Wood
DATE: Tuesday 13th April, 1993
TIMES: 12.00 - 4.00
AGES: 8 - 14 years
COST: £5.00
CONTENT: * GIRLS ONLY
* Coaching with qualified coaches
* 2 comp. tickets for a B.C.F.C. home league game
* Games/Tournaments
- VENUE: Simon Digby School, Chelmsley Wood
DATE: Tuesday 13th April, 1993
TIMES: 12.00 - 4.00
AGES: 6 - 14 years
COST: £5.00
CONTENT: * GOALKEEPERS COURSE
* Coaching with qualified coaches +
(if available) a session with Martin Thomas
* 2 Comp tickets for a B.C.F.C. home league game
- VENUE: Norman Green Centre, Solihull
DATES: Tues 13 April - Fri 16 April, 1993
TIMES: 1.00 - 4.00
AGES: 6-12 Years
COST: £15.00
CONTENT: * 4 days coaching from qualified coaches
* a football for each child
* Games/tournaments
- VENUE: Marston Green Boys School
DATES: Wed 14 April - Fri 16 April
TIMES: 10.00 - 3.00
AGES: 6-16 Years (Boys and Girls)
COST: £15.00
CONTENT: * 3 days coaching from qualified coaches
* a football for each child
* games/tournaments

For all these courses, please feel free to come along on the day if it is not possible to book in advance.



More happy junior
guests curtsy of
Birmingham City F.C

Derek Clydesdale 

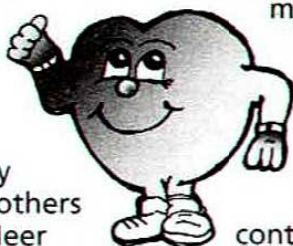
The Healthy Living Programme.

HAPPY EASTER!!

I hope that you are having a great holiday from school, and that you haven't eaten too much chocolate! After all - think of your teeth!

The Healthy Living Programme has been working with lots of Easter playschemes during the holiday period. Amongst others we have visited Meer Green Youth Club, Maypole Youth Club, Selly Oak Youth Community Centre and South Aston Community Project.

At the South Aston Project, we had to organise an American Day, so apart from the usual Soccer



session we also played American Football and Baseball.

Bookings for the summer term are almost complete with only a few spaces left, so if your school or youth club would like to participate in the programme please contact me soon. All those who take part receive a very worthwhile 'Healthy Living' session, and a TRITON health pack containing a pen, pencil, lots of leaflets about health and fitness and a lovely poster.

On 3rd April we held the qualifiers for the TRITON penalty competition. In a close fought contest 8 boys (sorry, no girls qualified) won their way to the final



which will take place here at St. Andrew's before our last home game against Charlton on May 8th. Details of the finalists and a photo will appear in the next programme.

Until then - stay healthy! And for further details of our activities, call me on 021 766 5206 *Sharon Edwards*



Community BLUES

Helping the most important people in football



Football is much more than a game of 90 minutes. Every day clubs throughout Britain are providing recreational and sporting opportunities for their local communities.

Much of this has been achieved with the help of the Football Trust. As part of its commitment to Football, The Trust has granted £4M to set up the National Football and Community Development Scheme.

Bringing club and community together, Trust-backed initiatives have provided a variety of local amenities, including:

- Artificial pitches for local teams
- Coaching for youngsters
- Support for women's football
- Facilities for people with disabilities

The Football Trust is helping the game at all levels.



THE FOOTBALL TRUST
Helping the game

St ANDREWS...

Swindon Town, our welcome visitors today, are still on course for clinching an automatic promotion place in the First Division, although in all reality a play-off spot seems now likely for Glenn Hoddle's side.

Perhaps, on reflection, it has been the 'Robins' away form which has let them down because at home their seasonal record has been quite impressive, only two defeats suffered to date.

Hoddle has certainly made a big difference to Swindon's style of play - and indeed, people will say that they have perhaps been the best footballing side in the First Division this season... sometimes playing too much football! But playing football doesn't always bring the right results... and this has certainly been the case at The County Ground, for occasionally Swindon have been bull-dozed out of their stride by sides playing

a much more direct brand of soccer - and consequently their performances have suffered.

But Hoddle has persevered and with still a handful of games remaining who knows where Swindon Town might be playing next season!

In the meantime these are the players (listed in A-Z order) who will be hoping to feature in the action against the Blues tonight:

Welsh international **PAUL BODIN**, 28, cost just £25,000 from Newport County in March 1988, but left Swindon for Crystal Palace in a £550,000 transfer in March 1991 only to return to the County Ground ten months later.

Skipper **COLIN CALDERWOOD**, 27, is the longest serving player at the club and is in his eighth season as a defender, being the only survivor of Swindon's 4th Division championship-winning side of 1986. He was previously with Mansfield Town.

Striker **SHAUN CLOSE**, 27, cost £70,000 from Bournemouth in 1989. A Londoner, he top-scored for the reserves last season with 25 goals.

Goalkeeper **FRASER DIGBY**, 25, a Yorkshireman from Sheffield, gained England U/21 honours earlier in his career and joined Swindon in 1986 having been an apprentice with Manchester United. In fact, last year he went on a month's loan back to Old Trafford.

Midfielder **MICKY HAZARD**, 32, from Sunderland, was secured from Portsmouth for £130,000 in September 1990, having served before with Spurs and Chelsea. He collected both F.A. Cup and UEFA Cup winners medals whilst at White Hart Lane and missed only two games last season.

The versatile **KEVIN HORLOCK** has come on in leaps and bounds over the last year or so, and has already show emmense talent in his first season of League soccer.

Young **PAUL HUNT**, 21, has come up through the ranks looks a bright prospect, while midfield/scorer **MARTIN LING**, 26, comes from West Ham and rejoined Swindon last year after almost five seasons with Southend. A former Exeter City apprentice he's slightly built but can score goals as well as make them.

ROSS MacLAREN, 31, is a great campaigner who has manned midfield for five years following his £140,000 transfer from Derby County. Once of Shrewsbury, he's made almost 500 appearances in the League having started off back in 1980.

PFA Chairman **BRIAN MARWOOD**, is another experienced 'pro' with over 400 games un der his belt for both Sheffield clubs, Arsenal and Hull City.

He has also played once on the wing for England.

CRAIG MASKELL, 24, is currently Swindon's leading marksman and was a £250,000 signing from Reading last July. He top-scored for the 'Royals' in 1991-92 and was also leading scorer with Huddersfield in two seasons prior to that. He started off with Southampton and actually played on loan with swindon six years ago.

DAVID MITCHELL, 30, from Glasgow, has 17 Australian caps under his belt and joined Swindon Town from Chelsea. He has also played in Germany (with Eintracht Frankfurt), Glasgow Rangers, Feyenoord (in Holland) and Newcastle United (on loan).

NICK SUMMERBEE, 22, is a utility player whose father (Mike Summerbee), grandfather and great uncle all appeared in the Football League. He began as a striker but is now a right-sided midfielder who can also play in defence.

Centre-back **SHAUN TAYLOR**, a £200,000 signing from Exeter City, a little over eighteen months ago, was Town's 'Player of the Season' last term and also took that title in 1980 when the 4th Division championship was won. He came into football late - at the age of 23 - from Biedford Town and scores some cracking goals from set pieces.

ADRIAN VIVEASH, 23, is another useful defender who has progressed through the ranks at The Copunty Ground. He made his League debut in 1990 and is now on a monthly contract.

Sriker **STEVE WHITE**, 33, was a free transfer signing from Bristol Rovers back in 1986. He reached the 100-goal mark for the Swindon last season before being sidelined with a back injury. He started off at Eastville in 1977 and has also played for Luton Town and Charlton Athletic, moving to both of those clubs for big fees, prior to returning to Rovers in 1983. Strong and forceful.



MANAGER ...

Player-manager **GLENN HODDLE**, now 35, born in Hayes, Middlesex, joined Swindon Town in April 1991. Capped 53 times by England at full international level plus a further 12 for the U/21's, as a midfielder, he spent 12 years with Spurs (1975-87, making 377 League appearances) before trying his luck in France with AS Monaco.

He was out injured for half of last season but is now back to full fitness and playing as a defensive sweeper behind the back four, still showing a great deal of class.

The Squads

BIRMINGHAM CITY

v

SWINDON TOWN

Andy Gosney
 Ian Clarkson
 John Frain
 George Parris
 Richard Dryden
 Trevor Matthewson
 Paul Moulden
 Ian Rodgeron
 Andy Saville
 Dean Peer
 David Smith
 Paul Mardon
 Richard Scott

Frazer Digby
 Nick Summerbee
 Paul Bodin
 Glenn Hoddle
 Colin Calderwood
 Shaun Taylor
 Brian Marwood
 Ross MacLaren
 Craig Maskell
 Martin Ling
 Shaun Close
 Micky Hazard
 Paul Hunt

REFEREE: J. W. Lloyd (Wrexham) **LINESMEN:** J. B. Lovatt, Red/Yellow flag; E. G. Hannah, Yellow flag.



SWINDON TOWN



MORE VISITORS FACTS

There have been 11 previous League games between Blues and Swindon, and our record against the 'Robins' reads as follows:

Venue	P	W	D	L	F	A
Home	5	3	1	1	10	5
Away	6	2	2	2	7	8
Totals	11	5	3	3	17	13

- Earlier this season a goalless draw was played out at Swindon and prior to that the teams hadn't met in League action since April 1989 when a crowd of just 4,026 at St. Andrews saw the 'Robins' almost doom Blues to the Third Division by winning 2-1.
- The first League game took place in November 1969 when, here at St. Andrews, two smartly taken goals by Geoff Vowden and Bert Murray gave Blues a 2-0 win in the Second Division before a good-sized crowd of 28,167.

DID YOU KNOW ...

- The first man to score four goals in a Third Division game was Harold Fleming when he helped Swindon Town crush luckless Luton Town 9-1 in August 1930. Swindon's other scorers in this Division 3 (S) fixture were Batty (2), Davies, Jefferson and Matthieson (o.g.). Centre-half Fred Hawley who also played for Blues, even missed a penalty for the 'Robins.'
- Alf Bond, the referee with one arm, was knocked out by a clearance from Swindon's George Hudson in September 1958 - thus being the first official to be k'od in a 3rd Division match!
- Swindon Town gained promotion to the 'old' First Division the summer of 1990 after winning the play-off final at Wembley. But their joy was short-lived as they were quickly demoted TWO DIVISIONS following financial irregularities, only to be re-instated in the Second Division after an appeal.

FORM BOOK...

Swindon Town visit St. Andrews this afternoon still very nicely placed for at least a play-off place, and this time their fans will be hoping for more luck. For just three seasons ago, Swindon won the Second Division play-off final, 1-0 against Sunderland, only to have promotion taken away from them for financial irregularities.

It took a couple of seasons for the Robins to recover. They finished just two points clear of relegation the following year, and then last season they ended a comfortable 8th. But under the guidance of Glenn Hoddle, this season has seen a real push for the Premier League, although their away from has not been too impressive, with only 5 wins picked up from the 19 outings previous to last week's visit to Tranmere Rovers.

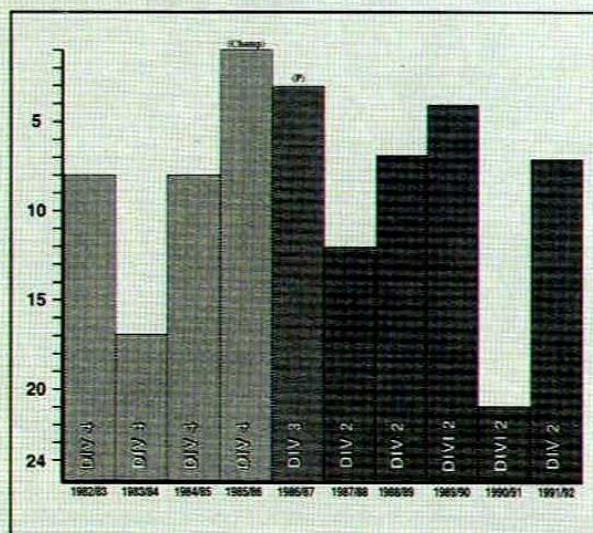
These wins have come at Bristol Rovers (4-3), Oxford United (1-0), Sunderland (1-0), Watford (4-0), and West Ham United (1-0).

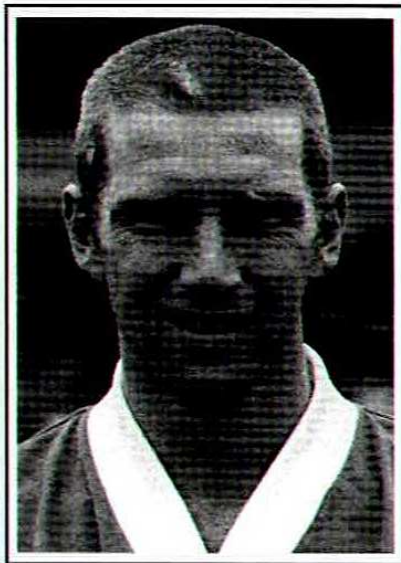
Swindon are currently in their sixth season in the 'second' division, following their promotions in successive seasons under Lou Macari in the mid-1980's. Their last spell at this level was for 5 seasons at the start of the 1970's and Swindon fans will be hoping that it will be second time lucky for them and they will reach the top flight for the first time in their history.

The last ten results (excluding matches v Tranmere (A) and Luton (H)):

3/4	v	Peterborough United	(H)	1-0
27/3	v	Brentford	(A)	0-0
24/3	v	Bristol City	(H)	2-1
21/3	v	Derby County	(A)	1-2
17/3	v	Luton Town	(A)	0-0
13/3	v	Newcastle United	(H)	2-1
10/3	v	Southend United	(A)	1-1
6/3	v	Watford	(A)	4-0
27/2	v	Portsmouth	(H)	1-0
23/2	v	Tranmere Rovers	(H)	2-0

The last ten seasons:





"I can only assume that someone from Blues came to watch me play for Hartlepool this season. I didn't know about the situation until after the West Brom game where I had scored two goals".

Today, the man that Terry Cooper brought to help ease the goal famine steps into the spotlight. Since moving from Hartlepool to Blues Andy Saville has struck four times in as many games and is obviously delighted with the way things have gone so far.

"Yes I'm delighted with the way things have gone. The funny thing was that I didn't know about the situation until after the West Brom game.

I came down to Birmingham on the Monday when I had talks with the manager

ANDY SAVILLE

and as luck would have it, I signed on that same day.

Since then things have been unbelievable. The boss has made other good signings and I think that the money made available has been spent wisely.

Some clubs can spend millions on a single player whereas the gaffer has spent just £800,000 on six new signings and to my knowledge has transformed the teams performances.

The highlight since moving from Hartlepool has most definitely got to be the Barnsley game, in which I made my debut and capped the performance with two much needed goals to help improve our average.

On top of all this the support has been magnificent. For instance the crowds for West Ham and Derby were especially good, and the fans make a tremendous amount of noise which is obviously an advantage to us.

I hope that we can stay up and realise our potential for next season. Everybody is ambitious at the club and I hope that I can keep my goalscoring record up.

These goals will seem so different from the

strikes that I used to get at Hartlepool where we went 13 matches without scoring and when I eventually got a goal (away at Blackpool 1-1), there seemed to be a semi-final atmosphere. Not to mention the champagne!

Fact File on: ANDY SAVILLE

BORN:

Hull 12/12/64

PREVIOUS CLUBS:

Hull, Walsall, Barnsley, Hartlepool

APPEARANCES FOR BLUES

4

GOALS

4

HIGHLIGHT OF CAREER:

Penalty for Crystal Palace against Hartlepool (3rd Round FA Cup this season). Debut for Blues v Barnsley (2 goals).

BIGGEST**DISAPPOINTMENT:**

I haven't really had any disappointments

FAVOURITE FOOD**+ DRINK:**

Pasta and Lager

HOBBIES:

Odd game of golf, squash

MUSIC:

U2, Simple Minds, The Alarm

NICKNAME:

SAV'



BLUES
News

Autograph

.....

SUPPORTERS CLUB NEWS

Whilst these notes were written immediately after the disappointment of the West Ham game when the lads played well but ended up with nothing, I hope that you are all having an enjoyable Easter, and that the team has added to that by picking up points against Derby and at Roker Park.

.....
We now have 2 away games left: -

Saturday 17 April -

WATFORD

Coaches leave

at 11.30a.m.

Tickets £9 Travel Club,

£8 St. Andrews Lounge

**Saturday 1 May -
BRISTOL ROVERS**

**Coaches leave
at 11.45a.m.**

**Tickets £9 Travel Club,
£8 St. Andrews Lounge**

.....
I'd like to remind our members to vote for their Player of the Year as soon as possible.

Everyone is welcome to the awards evening on April 29th in the St. Andrews Lounge.

Terry has promised that the players will come along, and hopefully he'll also join us on the evening.

Tickets are only £2, and available now in the club shop.

Linda

**We'll support you
EVERMORE**

FROM THE SUPPORTERS CLUB SOCCER TEAM

I am pleased to report that in our last match the lads played some of the best football we have produced all season, winning in fine style by 8-1 with two goals on his debut from Parton, one each from Ali, Pearson and Hobbis, and a superb hat-trick and first for the club from Worrall. Half-time score was 3-0.

I now have more information about the tournament on May 23rd. We will be playing at the Wilford Meadows Comprehensive School, Coronation Avenue, Wilford Village, nr. Nottingham.

The team in our group are Leicester City, Bury, Bristol City, Preston, Tranmere and Oldham. First match kicks off at 10.10a.m.

Today we welcome Swindon Town supporters club in the first meeting between our two clubs, I hope they enjoy their day with us.

Blues v Bromsgrove

Wall, Ahmed, Collins, Parton, Rawson, O'Neill, Gentry (Volante), Pearson, Worrall, Ali **subs** Carr, Thacker, Smith, Hobbis.

Enjoy today's game

Malcolm

**31st March 1993
Football
Combination
Division 2
SWANSEA CITY 2
BIRMINGHAM 2**

Simon Sturridge grabbed two excellent goals to keep alive Blues' chances of taking the second division title on their return to the Football Combination.

Sturridge struck twice in the second half after Blues found themselves twice trailing to a Swansea side who have surrendered their dominance at the top of the division to Bristol Rovers.

BLUES: Gosney, Scott, McKeever, Clarkson, Hicks, Rogers, O'Neil, Porich, Sturridge, Quinn (Robinson), Potter sub. Prince



*Simon Sturridge -
two goals at Swansea City*

**3rd April 1993
Midland Purity
Youth League
BIRMINGHAM 5
PETERBOROUGH
UTD 0**

In the end Blues proved too strong for a game Peterborough side. The first half was competitive and close, and Peterborough made a game of

In the WINGS

FOOTBALL COM. DIVISION 2

Aug	18th	A.F.C. Bournemouth	(A)	1-4
	26th	Bristol Rovers	(H)	2-3
Sep	1st	Torquay United	(A)	4-3
	9th	Cheltenham Town	(H)	1-1
	16th	Plymouth Argyle	(A)	1-2
	22nd	Torquay United	(H)	3-0
	30th	Bristol Rovers	(A)	2-7
Oct	7th	A.F.C. Bournemouth	(H)	1-0
	14th	Cheltenham Town	(A)	1-1
	21st	Plymouth Argyle	(H)	2-2
	28th	Cardiff City	(H)	1-0
Nov	11th	Plymouth Argyle	(A)	4-2
	18th	Exeter City	(H)	5-1
	24th	Cardiff City	(A)	3-3
Dec	9th	Torquay United	(A)	2-0
Jan	20th	Exeter City	(H)	1-1
Feb	3rd	Swansea City	(A)	2-2
	10th	Yeovil	(A)	1-1
	17th	Swansea City	(H)	3-1
	23rd	Bournemouth	(A)	0-0
Mar	3rd	Bristol Rovers	(H)	4-1
	10th	Yeovil	(H)	4-2
	24th	Exeter City	(A)	5-1
	29th	Cheltenham Town	(H)	2-0
	31st	Swansea City	(A)	2-2
Apr	6th	Yeovil Town	(A)	
	14th	Cardiff City	(H)	

STAFFORDSHIRE SENIOR CUP

Oct	13th	Stafford Rangers	(A)	2-1
Mar	15th	Chasetown	(A)	1-0

FOOTBALL COMBINATION LEAGUE CUP

Nov	3rd	Cheltenham Town	(A)	6-0
Jan	13th	Bristol Rovers	(H)	1-2

BIRMINGHAM SENIOR CUP

Nov	7th	Kings Heath	(H)	4-0
Jan	12th	Atherstone	(A)	2-3

MIDLAND PURITY LEAGUE

Aug	15th	Aston Villa	(A)	1-5
	22nd	Wolves	(H)	4-0
	28th	Coventry City	(H)	2-1
Sep	5th	Derby County	(A)	3-1
	12th	Grimsby Town	(H)	6-0
	19th	Leicester City	(A)	1-1
Oct	3rd	Mansfield Town	(A)	1-1
	10th	Northampton Town	(H)	7-0
	17th	Notts County	(A)	4-0
	30th	Peterborough Utd	(A)	1-1
Nov	7th	Grimsby Town	(A)	3-0
	14th	Port Vale	(H)	1-0
Dec	12th	Nottingham Forest	(H)	1-4
Jan	9th	Aston Villa	(H)	1-0
	23rd	Lincoln City	(H)	5-3
	30th	Coventry City	(A)	5-2
Feb	6th	Derby County	(H)	1-2
	13th	Leicester City	(H)	2-0
	19th	Lincoln City	(A)	2-0
	27th	Mansfield Town	(H)	3-0
Mar	6th	Northampton Town	(A)	4-1
	13th	Stoke City	(H)	2-0
	20th	Notts County	(H)	3-0
	27th	Nottm. Forest	(A)	1-1*
Apr	3rd	Peterborough Utd	(H)	5-0
	9th	Port Vale	(A)	
	16th	Shrewsbury Town	(H)	

SOUTHERN JUNIOR FLOODLIT CUP

Rd 1	Sep 14th	Reading	(H)	3-1
Rd 2	Nov 9th	Fulham	(H)	2-0
Rd 3	Feb 2nd	Arsenal	(A)	1-1
Rd 3(R)	Feb 16th	Arsenal	(H)	2-3

MIDLAND YOUTH CUP

Rd 2	Oct 12th	Stoke City	(A)	3-0
Rd 3	Mar 27th	Nottm. Forr.	(A)	1-1*
		(won 5-4 on pens)		

MIDLAND PURITY LEAGUE CUP

Rd 1	Oct 24th	Aston Villa	(A)	3-1
Rd 2	Nov 28th	Coventry C	(A)	1-2

F.A. YOUTH CUP

Rd 2	Dec 14th	Wolves	(H)	4-4
R	Dec 17th	Wolves	(A)	1-4

it. Despite this Blues had most of the early pressure, and played some attractive football, creating several chances but the Peterborough 'keeper was in fine form. The opening goal was scored on 40 minutes when Ben Sedgemore rose to head home an excellent cross from Fowkes.

James Quinn increased the lead within five minutes of the re-start after which the game changed completely as everything began to click for Blues. Indeed, but for their 'keeper, Peterborough would have suffered an even worse defeat. Steve Robinson scored with a tremendous twenty yarder, before Simon Black and Dave Aston completed the scoring.

BLUES: Steadman, Scott, McKeever, Robinson, Morley, Wratten (Chaliner), Black, Aston, Quinn, Sedgemore, Fowkes sub. Wardle.

**NEVILLE OVENDEN
FOOTBALL COMBINATION
DIVISION 2 LEAGUE TABLE**

	P	W	D	L	F	A	Pts
Bristol Rovers	23	14	5	4	51	34	47
Swansea City	22	13	6	3	63	29	45
Birmingham	25	12	9	4	57	40	45
AFC B'mouth	22	9	5	8	48	33	32
Plymouth A	23	7	5	11	49	57	26
Yeovil Town	21	7	5	9	40	60	26
Cheltenham	22	5	9	8	34	46	24
Cardiff City	20	6	5	9	40	39	23
Exeter City	21	6	3	12	36	47	21
Torquay Utd	21	5	2	14	23	52	17

**MIDLAND PURITY
YOUTH LEAGUE**

AT 31st MARCH 1993

	P	W	D	L	F	A	Pts
Nott'm Forest	25	21	3	1	67	22	66
Derby County	28	18	6	4	79	44	60
Birmingham	24	17	3	4	64	23	54
Lincoln City	28	13	5	10	57	55	44
Aston Villa	27	13	2	12	53	37	41
Stoke City	28	11	7	10	66	56	40
Notts County	28	10	10	8	44	36	40
Coventry City	24	11	6	7	43	32	39
Leicester City	26	11	4	11	39	37	37
Walsall	24	11	3	10	58	44	36
Shrewsbury	27	10	1	16	45	60	31
WBA	25	7	8	10	32	47	29
Mansfield	27	7	7	13	28	44	28
Wolves	26	7	6	13	43	46	27
Port Vale	27	7	5	15	39	61	26
Peterborough	24	7	5	12	36	64	26
Grimsby Town	23	3	6	14	13	39	15
Northampton	24	3	4	17	26	70	13

**BLUES YOUTH TEAM IS
SPONSORED BY HALEY-
ROE. THANK YOU FOR
YOUR SUPPORT.**

TODAY'S MATCHBALL SPONSOR

Chequers

10, Nightcote Drive, Solihull



TODAY'S ASSOCIATE SPONSOR...

Lucozade *SPORT*

THE SPORTS
PERFORMANCE
DRINK

For all
Commercial enquiries
call Mark on 021-772-
0101 ext.24.

TRITON



Hello Everybody

A Happy Easter to you all. I hope you all enjoyed your excesses of chocolate yesterday.

The Commercial restructured Department has been slightly restricted this week following the departure of Joan Hill. We all wish Joan every success and good luck in her new job at Lincoln City.

Jean Deeley is a new face in the department and she will introduce herself to you all below.

May I extend a warm welcome to our matchball sponsors this afternoon, Chequers Pub in Solihull. I hope that Keith Jeffreys and his guests all have a thoroughly enjoyable afternoon at St. Andrews.

Our Associate Sponsors as ever are Lucozade. Their support of the club in '92/93 has been fabulous and once again my special thanks go to Kevin Hallam and all at Smith Kline Beecham.

Enjoy the rest of your Easter break, cheer the lads on and see you soon. Now over to Jean.

Bye for now

..... *Mark.*

As a new member of staff, I would like to introduce myself. My name is Jean Deeley and I have joined the Commercial Department as Commercial Assistant to Mark Bowler.

I am no stranger to football as I spent six very happy years on the Commercial side, at close neighbours, West Bromwich Albion where I gained a whole load of invaluable experience. I have also had a short spell with Aston Villa, working in their ticket office.

I am joining Birmingham City at a very exciting time and, along with Mark, I will be endeavouring to make the Commercial Department as successful as possible. Obviously, you the supporter plays a very important part in the success of any football club and with your support we can look forward to an extremely successful future here at Birmingham City Football Club.

Today's MASCOTS



WILLIAM BRYAN.

William is 12 years old in June and goes to Lynden School in Solihull. Asked who his favourite player is - William replied the whole team.



ROSIE JENNINGS.

Rosie is 3½ years old and goes to Kineton Green Nursery School in Olton. Her favourite Blues players are Paul Peschisolido and John Fran. Rosie loves listening to her favourite group Pop Will Eat Itself.

Commercially SPEAKING



TICKET INFORMATION & COMPETITION LINE 0891 332 988

Collectors CORNER

**I'm not a philatelist.....
but I know a man who is!**

And recently I was chatting with him about old stamps, and completely out of the blue he produced a handful which were designed and released for the 1952 Soccer Olympic games, plus a few others from the World Cup and the European Cup competitions of the late fifties. All were in excellent condition and by all accounts they are now pretty rare items, fetching a fair bit of money.

I have a few odd 'football' stamps among my soccer memorabilia and I contacted this friend again to get a value put on them....and I was somewhat surprised when he told me what they were really worth on the open market today!

Admittedly I haven't got too many - only a couple of dozen or so - but if you have any soccer-orientated stamps in your collection, hold on to them for a few more years!

Like programme-collectors, there are hundreds upon hundreds of people all over the world who dabble in stamps, with their ages ranging from five year-olds up to eighty year-olds! I wish I had concentrated more on stamps as a youngster now that I've learnt what certain odd ones can go for nowadays, but I'm pleased with what I have, and I might even contemplate adding to my collection....that's if I can find out where there are some 'soccer' ones sale!

I suppose, in truth, it pays you to hold on to anything appertaining to football.



You never know what the future might bring!!

These cards which keep on coming out with the weekly magazines will for sure be worth money in years to come....I have some dating back to the 1920's and these are now priceless, gaining in value every month, even rising in price than interest on an account at the bank!

Tony Matthews

Kit Sponsors

Terry Cooper
Jason Beckford
Ian Clarkson
Louie Donowa
Paul Fitzpatrick
Matthew Fox
John Frain
John Gayle
Andy Gosney
Martin Hicks
Scott Hiley
Paul Mardon
Trevor Matthewson
Alan O'Neil
Dean Peer
Paul Peschisolido
Graham Potter
George Parris
Ian Rodgeron
Darren Rogers
Mark Sale
Simon Sturridge
Paul Tait
Martin Thomas
Andy Saville
David Smith
Richard Dryden

Full Kit £250

Chapter 22 Management & Record Ltd.
P. J. Ham Maintenance
Linda Goodman
M & M Beers
Cartwright & Lewis
Birmingham Beer Supplies
J. J. Electrical Services
Ash Motor Services
Lucozade
Supporters Club
Furlong Fencing
Falcon Taxis 233 0000
Colorvision
Linda Goodman
Andrew Herbert - P.S.L.
Lee Malin for Comic Relief
David John Butchers
Home Image
Sodi-Tech
Lucozade
Albion - The Cylinder People
Glow Worm
Powerpacks U.K. Ltd.
Lee Malin for Save The Children
Neil Lonergan - MAM Leisure
Neil Lonergan - MAM Leisure
Dorgrove Floors Ltd



**ANDY SAVILLE'S
KIT IS SPONSORED BY
Neil Lonergan - MAM Leisure**

Kit SPONSORS

NEWS NEWS NEWS NEWS

While Blues missed out on three points against Derby last week, the other 'relegation' results could have been kinder also.

Cambridge ended a three a three match run of defeats with a 3-0 home win over Notts County, Dean Thomas of the visitors receiving his marching orders for elbowing Kevin Bartlett, sold to the U's by County on transfer deadline day, grabbed Cambridges second.

The Bristol derby ended in a 2-1 victory for City at a packed out Ashton Gate. The kick off had to be delayed to allow the 21,854 fans in, and it was City who took the lead through Nicky Morgan. Rovers then had Ian Alexander sent off in the 79th minute for handling in the area and Brian Tisson converted the resultant penalty. Rovers' hit a consolation goal through John Taylor.

Sunderlands' Don Goodman snatched a late equaliser to keep Brentford in relegation trouble and this 1-1 draw at Griffin Park leaves the Bees without a home win in 10 matches.

At the top of the table Portsmouth smashed Peterborough 4-0, with Guy Whittingham getting his fourth hat-trick of the season. The prolific goalscorer took his tally to 43 to equal Billy Haines' 66-year-old club record, and then missed a penalty. This result pushed Pompey to second spot on the night after Millwalls' 1-0 defeat at Grimsby.

Today's visitors Swindon suffered at the hands of Tranmere last Tuesday, Kenny Irons grabbing a hat-trick in a 3-1 victory which keeps Rovers' play-off hopes burning. Swindon took the lead through Dave Mitchell, but Irons chose to end his four month goal drought in emphatic style.

Wolves recently issued a hands-off warning to Sunderland after they expressed an interest in midfielder Paul Cook. Roker boss Terry Butcher was apparently keen to sign Cook in a pre-transfer deadline deal, but Graham Turner made it clear that the former Norwich player was not for sale.

Meanwhile Wolves £1 million rated 'keeper Mike Stowell has agreed a one-year extension to his contract. The former Everton player had been expected to leave Molineux

when his contract out runs out this summer if Wolves miss out on promotion, but has agreed instead to stay for another year, by which time the clubs £14 million stadium re-development will be complete.

Newcastle United are the latest club said to be interested in Oxford's winger Joey Beauchamp although a £1 million bid has apparently been rejected.



Division 1 - Leading scorers

(to 4/3/93)	BL	CC	FA	AI	Tot
G. Whittingham (Portsmouth)	38	2	-	3	40
G. Blissett (Brentford)	17	4	-	4	25
J. Aldridge (Tranmere Rvs)	19	2	1	2	24
A. Saville (Birmingham City)	17	1	5	1	24
D. Kelly (Newcastle United)	20	2	1	1	24
P. Kitson (Derby County)	17	2	-	4	23
P. Furlong (Watford)	19	3	-	-	22
A. Cole (Newcastle United)	14	4	-	1	19
C. Maskell (Swindon Town)	17	1	-	1	19
T. Morley (West Ham United)	17	-	1	1	19
T. Adcock (Peterborough Utd)	15	2	1	-	18
S. Bull (Wolves)	15	1	1	1	18
W. Biggins (Barnsley)	16	2	-	-	18
P. Gray (Luton Town)	17	-	1	-	18
G. Peacock (Newcastle United)	12	2	2	2	18
C. Allen (West Ham United)	13	-	1	3	17

HALF-TIME SCOREBOARD

- A** Brentford v Notts County
- B** Bristol City v Wolves
- C** Charlton Athletic v Peterborough
- D** Grimsby Town v Sunderland
- E** Newcastle Utd v Oxford Utd
- F** Portsmouth v Derby County

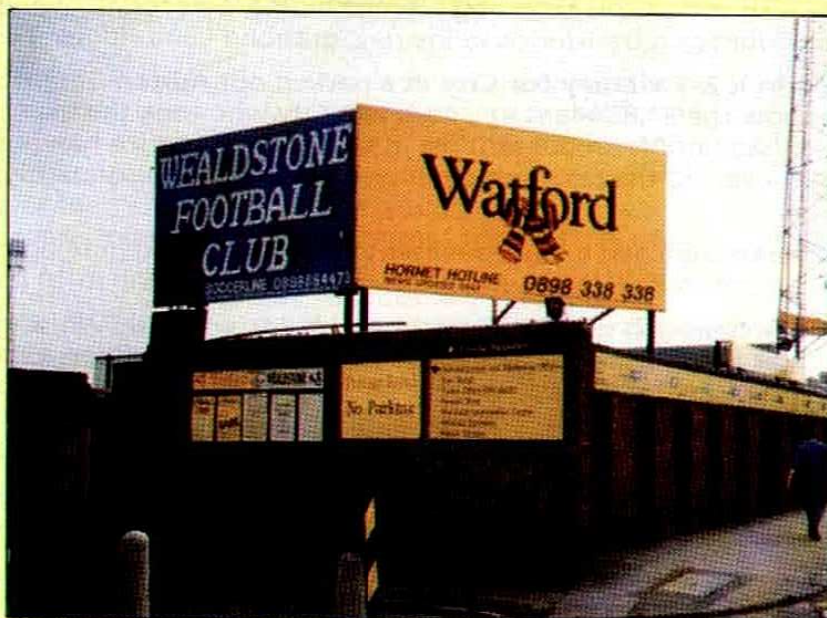
Tranmere v Barnsley (5.00p.m.)

PLAYING TOMORROW

Cambridge Utd v Watford
Luton Town v West Ham Utd

WATFORD

Saturday 17th April 1993
Kick-off 3.00p.m.



Watford moved into their present home at Vicarage Road in 1921, just as the club was being absorbed into the Football League's newly-formed Division 3.

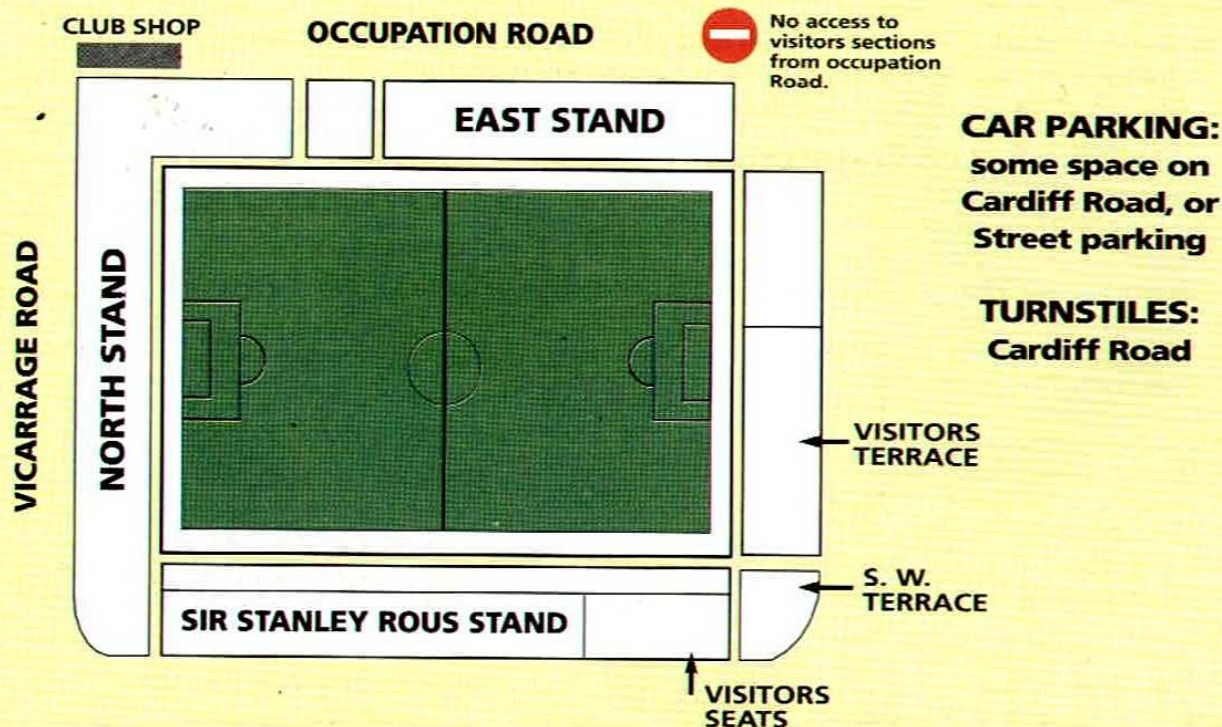
The original agreement was a 21-year lease, and the first match to be played at the ground was in August 1922.

During the 1930s the ground developed

gradually. Concrete terraces were built during close seasons, and the original West Stand was built. In 1934 the ground was first used for 'flapper' racing - dogs one class above whippets.

Floodlights were installed in 1953, and in 1959 a roof was built above the Rookery End terrace. The East stand was improved in 1969, and with the imposing new West Stand now in place, the ground has something of an imbalanced look about it.

Unusually, it is the home fans who get wet at Vicarage Road, since the home terrace is uncovered. Rather like Chelsea's Stamford Bridge, the overall feeling is one of too much space, and the ground does not have a compact feel.





How to get there - by road ...

Watford is an awkward ground to get to because you have to approach it from the right direction in order to avoid a long walk around to the visitors turnstiles.

Choose your own route down to London. Route 1 - M6 Southbound, join M1 Southbound to Junction 5; Route 2 - M40 down to M25, clockwise along M25 to join M1 Southbound at Junction 21, then down to J5 of M1.

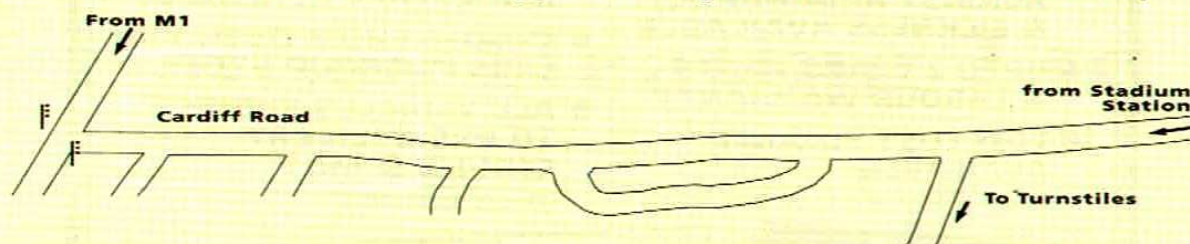
At Junction 5 of the M1, take the slip road S.P. Harrow A41, and turn onto the A41. Turn right at the next roundabout, S.P. Watford A4008. Go through traffic lights, and over the next roundabout.

Enter Watford, and when the road splits, take the right hand lane, bear right, then bear left under two railway bridges.

At the next traffic lights turn right into Deacons Hill. Pass the JET garage, and then turn left at the traffic lights into Cardiff Road.

The visitors turnstiles for both seats and terrace are up Cardiff Road (see map). There is limited parking up Cardiff Road, or you can park in local streets or in NCP in Watford itself; although you'll have quite a walk if you choose the latter.

Total distance from St. Andrews is approximately 104 miles. (Via M6/M1 route).



How to get there - by rail ...

There is a railway station very close by the away turnstiles, for away fans only. Simply join the shuttle service from Watford Junction.

Depart Birmingham N.S. 09.48 10.48 11.36 Arrive Watford Junction 11.06 12.08 13.37

Depart Watford Junction 18.11 19.11 Arrive Birmingham N.S. 20.17 21.37

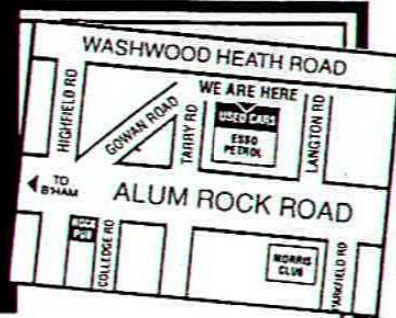
British Rail inform us that the cheapest day return ticket to Watford Junction is:

£19 adults, £9.50 children.

Please note: The above details are meant as a guide only. Birmingham City cannot be held responsible for error, omissions, or roadworks.

Blues on TOUR

COUNTY GARAGES



SPONSORS OF BIRMINGHAM CITY F.C.

ALUM ROCK (242 Alum Rock Rd -
CORNER OF TARRY ROAD
Esso Petrol Station)

Beat this!

£250

CASH IN YOUR HAND

(WITH EVERY CAR PURCHASED CASH OR FINANCE)

PLUS

THE VERY BEST PART EXCHANGE DEALS IN BRUM

- FINANCE PROTECTION AGAINST REDUNDANCY & SICKNESS AVAILABLE
- UPTO 2 YEARS PARTS & LABOUR WARRANTY
- LOW COST FINANCE AVAILABLE
(Subject to status - written details on request)
- INDEPENDENT VEHICLE INSPECTION AVAILABLE
- CHOOSE FROM OVER 180 CARS IN GROUP STOCK
- ALL VEHICLES SUBJECT TO PRE-DELIVERY SERVICE & MOT
(Where applicable)


**021-327
3266**

CARS BOUGHT FOR CASH!

OPEN 7 DAYS A WEEK
MON-FRI TILL 8p.m. SAT 9-6 SUN 10-4

THIS OFFER APPLIES TO ALUM ROCK BRANCH ONLY - AND WHEN YOU BRING THIS AD WITH YOU

What's the CONNECTION?

BLUES & SWINDON

- Gary Emmanuel scored six goals in 78 games for Blues between 1971 and 1978. he then moved to Bristol Rovers and in July 1981 was transferred to Swindon Town, leaving The County Ground for Newport three years later.
- Tony Evans, now Youth Development Officer at Wolves, netted 33 goals in 76 League and Cup games for Blues during a four-year stay at St. Andrews 1979-83. He eventually found his way to Swindon Town in 1985 after spells with Crystal Palace, Wolves, Bolton and Exeter City, and after Swindon he played for Walsall and Stafford Rangers before joining the staff at Molineux.
- Nomadic striker David Geddis had an eventful career which saw him serve, in turn, (1973-92) with Ipswich Town, Luton Town, Aston Villa, Luton (again, this time on loan), Barnsley, Blues (1984-87 - scoring 21 goals in 57 games), Brentford (on loan), Shrewsbury Town, Swindon Town (1988-90) and finally Darlington.
- Centre-half Fred Hawley played for Sheffield United before World War One, and Coventry, Blues (1920), Swindon Town, Bristol Rovers, Brighton, Q.P.R. and Loughborough Corinthians in the 1920's. He made just three appearances for Blues, but then spent three years with the 'Robins.'
- Wing-half Stan Harland guided Swindon Town to the Third Division championship and victory in the 1969 League Cup Final at Wembley and to success in the Anglo-Italian Cup the following year. He played over 250 games for the 'Robins' before joining Blues in 1971. Had 52 outings whilst at St. Andrews and then went on to manage both Yeovil Town and Gravesend & Northfleet. He started his career with Burnley, and also played for New Brighton, Everton, Bradford City and Carlisle United.
- George Wolstenholme Hicks, a talented left-winger, scored 18 goals in 82 games for Blues between 1928 and 1932, having been signed from Manchester City. He left St. Andrews for Old Trafford and found his way to Swindon Town in August 1933, later playing for Rotherham and Manchester North End. He appeared in the 1926 F.A. Cup Final for Manchester City whom he also helped win the Second Division title in 1928.
- Goeff Moreland, a tall, well built centre-forward, had four games for Blues in 1938-39 after moving to St. Andrews from Swindon.
- Inside-forward Ian Muir, now with First Division Tranmere Rovers, made two appearances for Blues in the early '80's and was on loan to Swindon from Brighton in 1985.
- Current Stoke City boss Lou Macari has managed both Blues and Swindon Town.

Baines Heating Ltd Central Heating Health Check

- ✓ One price fully comprehensive cover on all types of boilers. (Cover charge £70 per year).
- ✓ No hidden exclusions in the cover. It covers everything.
- ✓ When your boiler is beyond economical repair we give you a new one at No Extra Cost
- ✓ We cover boilers at whatever age (subject to inspection)

Baines Heating Ltd. 1515 Pershore Road, Stirchley, Birmingham B30 2JH

Ring now 021 - 458 1989

**SATURDAY 3RD APRIL 1993
Barclays League Division 1
BIRMINGHAM CITY 1
WEST HAM UNITED 2**

BLUES: Catlin, Clarkson, Frain, Parris, Dryden, Matthewson, Moulden (Sturridge), Rodgerson, Saville, Peer, Smith sub. Mardon

WEST HAM: Miklosko, Breacker, Brown, Potts, Gale, Bishop, Robson (Holmes), Butler, Speedie, Jones (Foster), Keen

REFEREE: M.G. Peck Linesmen: G. Edgeley, R.W. Harris

SCORERS: Blues - Saville West Ham - Brown, Bishop

ATTENDANCE: 19,053 **WEST HAM CONTINGENT:** 2,623

What the papers said

"To the 70,000 or so punters at Aintree on Saturday who have good reason to claim they were robbed, can be added the vast majority of St. Andrew's largest crowd of the season. The promotion-chasing Londoners were outplayed, outfought and out thought almost throughout. That Ian Bishop's 89th minute goal denied Blues even a share of the points was a downright travesty of footballing justice that left the crowd with a crushing sense of anti-climax."

Adrian Milledge, Birmingham Post

"Terry Cooper shook his head in disbelief after seeing his battling Blues throw away a three-point relegation lifeline. They seemed to be moving to a crucial and deserved victory over West Ham when the Hammers incredibly turned the game on it's head with two late goals. Blues haven't got time to feel sorry for themselves, though."

Ian Willars, Evening Mail

"Birmingham deserved more, and ex-West Ham midfield man George Parris will feel more cheated than most not to see his new club win on the back of Andy Saville's first half goal."

Ralph Ellis, Daily Star

**GET POSITIVE RESULTS
FROM A NEW BUSINESS SYSTEM**



AT POSITIVE SYSTEMS WE PROVIDE A COMPLETE HARDWARE AND SOFTWARE COMPUTER PACKAGE TAILOR-MADE TO SUIT YOUR BUSINESS NEEDS.

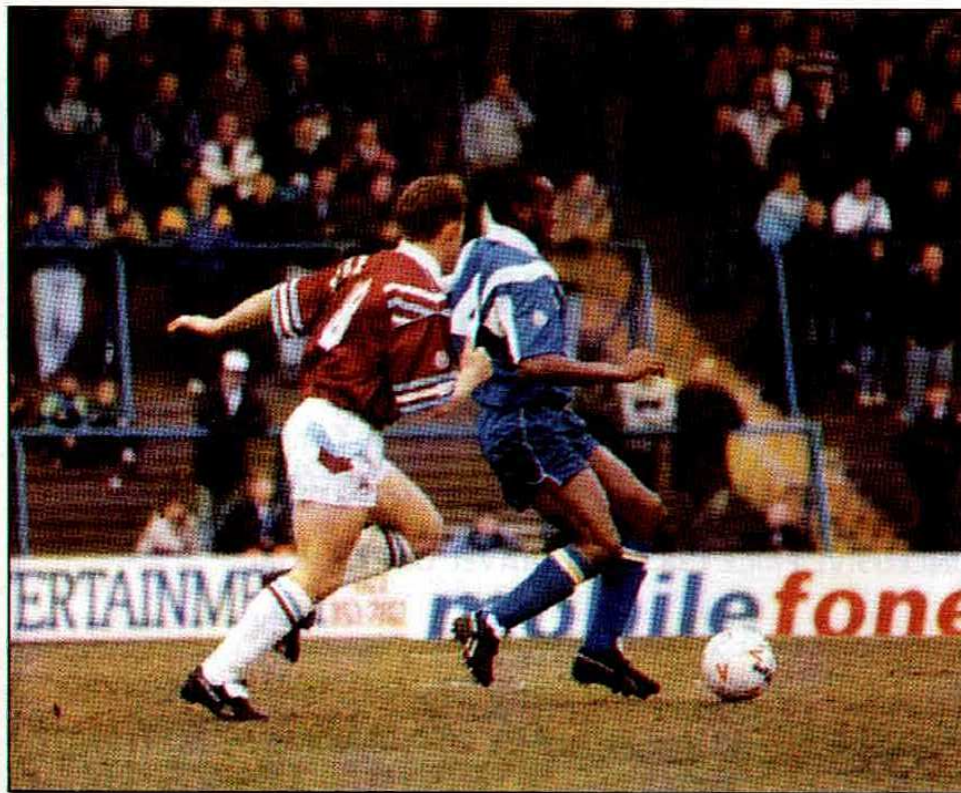
OUR KNOW-HOW AND CUSTOMER SERVICE WILL ENSURE THE RIGHT SYSTEM TO MAXIMISE YOUR EFFICIENCY AND INCREASE YOUR SALES POTENTIAL.

* SPECIALISTS IN THE CLOTHING, FOOTWEAR AND SPORTS GOODS INDUSTRIES.

- RETAIL
- WHOLESALE
- CASH AND CARRY
- CONCESSIONS
- POINT OF SALE
- PRODUCTION
- MAIL ORDER
- ACCOUNTS
- WORD PROCESSING
- SPREAD-SHEETS

POSITIVE SYSTEMS LTD

CHARTERLAND HOUSE, 2251, COVENTRY ROAD, SHELDON, BIRMINGHAM B26 3NX
TELEPHONE: 021-742 0379



GEORGE PARRIS -
inspirational in Blues' midfield against his old club

.....

Tuesday 6th April 1993
Barclays League Division 1
BIRMINGHAM CITY 1
DERBY COUNTY 1

BLUES: Gosney, Scott, Frain, Parris, Dryden, Mardon (Potter), Moulden, Rodgeron, Saville, Rogers, Smith. Sub: Quinn.

DERBY: Taylor, Round, Nicholson, Patterson, Short, Coleman, Mickelwhite (Sturridge), Kuhl, Stallard, Johnson (Hayward), Simpson.

REFEREE: J. B. Worall **LINESMEN:** D. T. Colwell, J. J. Wilkinson

SCORERS: Blues - Moulden Derby - Johnson.

ATTENDANCE: 15,424 **DERBY CONTINGENT:** 1,478

What the papers said

"Paul Moulden last night kept Birmingham's hopes of First Division survival alive with a spectacular equaliser nine minutes from the end of this tough Midland derby. The Blues had stared a second successive home defeat in the face - and a disastrous drop back into the bottom three - until Moulden struck in sensational fashion".

Hugh Jamieson, Daily Mirror

"A touch of long awaited quality from Paul Moulden salvaged a valuable point for Birmingham City on a night when poor defending and wasted enterprise threatened to sever their lifeline to First Division survival.

The midfielder's 82nd minute strike brought a roar of sheer relief from the St. Andrews crowd of 15,424, frustrated as they were by the fumbling efforts that preceded it. It was a goal of ironic simplicity as goalkeeper Andy Gosney's long clearance was headed on by Andy Saville for Moulden to volley left-footed from 15 yards his second goal since signing for £150,00 from Oldham last month".

Michael Ward, Birmingham Post

"The Blues, desperate for First Division survival points, lay siege on the Derby goal. They missed a host of chances until Paul Moulden managed to grab an 82nd - minute equaliser".

Peter White, The Sun

COME ON YOU BLUES

TRAVEL BY EXECUTIVE COACHES WITH VIDEO TOILETS AND LIGHT REFRESHMENTS

Pick-up points: DROITWICH (Victoria Sq.), BROMSGROVE (Asda Car Park), REDDITCH (Church Green), ST. ANDREWS

SATURDAY 17TH APRIL

WATFORD v BLUES £10.00

SATURDAY 1ST MAY V.I.P. DAY.

BRISTOL ROVERS v BLUES

* BRUNCH AT ST. ANDREWS (With bar facility)

* ENTERTAINMENT BY A LOCAL COMEDIAN

* RETURN EXECUTIVE COACH TRAVEL

* TICKET FOR THE GAME

FULL INCLUSIVE PRICE £38.00 OR TRAVEL ONLY £10.00

WORLD CUP FOOTBALL AT WEMBLEY

WEDNESDAY 28TH APRIL

ENGLAND v HOLLAND RETURN TRAVEL ONLY £10.00

STOP PRESS: ONCE AGAIN WE SHALL BE ORGANIZING SOMETHING AROUND BLUES' PRE-SEASON TOUR - DETAILS TO BE ANNOUNCED

FOR DETAILS AND BOOKING TELEPHONE: TONY CLARKSON 021 353 7812

Credit Card booking facility. Midland Entertainment, 10 Park View Road, Four Oaks B74 4PP

ACCESS CREDIT CARD BOOKING FACILITY VISA

UP TO 18 MONTHS INTEREST FREE CREDIT

TYPICAL EXAMPLE

CASH £799
Deposit £385
48% 18 months
at £23.00
Total Credit Price £799

We will Beat any genuine
retail camcorder price in
this area by at least
IN CASH GOODS £25
OR GUARANTEES

- Ultra intelligent autofocus + exposure system
- 1/400th second shutter
- powerful 8 x zoom lens
- Hi-fi quality sound
- Model

PLUS
SAVE
£50
SANYO VMD 66

WITH THIS ADVERT
£499
• Long Play
• Remote Control
• Fuzzy Logic



JVC 323 EK

- Autofocus/Auto BLC
 - 3 Lux light
 - 8x Power 300m
- R.R.P £699

SAVE
£100 **£599**

PLUS

FREE TEAM SIGNED

football with
EVERY camcorder

COLORVISION

OPEN LATE NIGHT 8PM

SATURDAY & SUNDAY 10AM-6PM

(individual branches may vary phone to confirm)



ERDINGTON

224-32 High Street
(Next to TSB Bank)
384 7468

NORTHFIELD

797a Bristol Road South
(opp Woolworths)
475 8445

1	2	3
4		5
	6	

Quiz TIME

compiled by William Walker

- Which was the last Midlands team to win the League Cup?
- What was the result of the Eire-Northern Ireland match played in Dublin last month?
- Who missed a penalty in the 1988 European Championship Final?
- Which club from Ulster won the Irish Republic's League in 1989?
- Who was Leeds United's first £1m signing?
- Against which country did Paul Gascoigne score twice this season?
- Where did Sunderland beat Norwich in the 1992 F.A. Cup Semi-Final?
- Which was the only European country not to concede a goal in the qualifying competition for the 1990 World Cup?
- Which Midlands Club has won more League matches than any other?
- Which goalkeeper moved from Leicester to Stoke in 1967?
- Who did Billy Bonds replace as West Ham manager in 1990?
- What was unusual about the 1987 F.A. Cup quarter-final results?
- Which club did Jimmy Scouler boss from 1964 to 1973?
- Who was the 1992 PFA Player of the Year?
- Which team lost in all four of their Scottish Cup Final appearances during the 1980's?
- In which year did Ian Rush win the PFA Young Player of the Year award - 1981, 1983 or 1985?
- Which was the last Dutch team to win the European Champions cup?
- Who plays at the Vetch Field?
- Which Hibs fan presents BBC's Entertainment Express?
- When the two Bristol sides both won promotion from Div. 3 in 1989-90, which finished as champions?

ANSWERS 1. Nottingham Forest 2. 3-0 to Eire 3. Igor Belanov 4. Derry City 5. John Lukic 6. Turkey 7. Hillisborough 8. England 9. Aston Villa 10. Gordon Banks 11. Lou Macari 12. They were all away wins 13. Cardiff City 14. Gary Pallister 15. Dundee United 16. 1983 17. PSV 18. Swansea City 19. John Leslie 20. Rovers

Match Sponsors

Notts County	Lucozade
Exeter City	Triton
Grimsby Town	Central T.V.
Southend Utd	Barana Int. / Hottentot
Wolverhampton W	Aggreko
Cambridge (A.I. Cup)	Triton Associates
Leicester City	Triton
Bristol Rovers	Triton Consortium/Daniels
Newcastle United	Trim Contracts
Brentford	Hartle Industrial Pipework
Ascoli	Lucozade
Watford	Ralgex
Sunderland	D. J. Ponsonby
Peterborough U	Steelstock
Millwall	Lucozade
Bristol City	Central Pallet
West Ham United	Beddis Hobbs
Tranmere Rovers	Hartle Industrial Pipework
Charlton Ath.	Triton

Matchball Sponsors

Notts County	Lucozade
Grimsby Town	Yorkshire T.V.
Southend Utd	Hollywood Signs
Wolverhampton W.	Sodi-Tech
Leicester City	Kingsbury
Bristol Rovers	M A M Leisure
Newcastle United	Lucozade
Brentford	Sodi-Tech
Watford	M. I. Painting
Sunderland	Office Tech
Luton Town	Lucozade
Peterborough Utd	Haley-Roe
Cambridge Utd	News Of The World
Millwall	Lucozade
Oxford United	Enterprise Windows
Bristol City	Lucozade
Barnsley	Soditech
West Ham United	Folium
Derby County	Sertec
Swindon Town	Chequers
Tranmere Rovers	Hollywood signs
Charlton Ath.	G.B. Floorcovering

Associate Sponsors

Wolverhampton W.	Johnstones Paints
Leicester City	Aggreko
Newcastle Utd	City Business Systems
Brentford	Midland Bank
Ascoli	Lucozade
Watford	Lucozade
Sunderland	Lucozade
West Ham Utd	Lucozade
Derby County	Air Express

Boardroom Sponsors

Notts County	Mitchells+ Butler
Wolverhampton W.	Mitchells+ Butler
Leicester City	Lucozade
Newcastle United	Aggreko
Oxford United	Miles Industies
West Ham United	Aggreko
Charlton Ath	Lucozade

Thanks to Our
SPONSORS

In the
CLUB
SHOP

NOW IN
STOCK
ALL
UNDER £1



COASTER	_____	99p
KEY RINGS	_____	75p
WRAPPING PAPER	_____	75p
ERASERS	_____	75p
TAX DISC HOLDER	_____	85p
B.C.F.C. STICK OF ROCK	_____	99p
B.C.F.C. DOOR HANGERS	_____	25p



AND WHAT
ABOUT OUR
SUPER
GREETINGS
CARDS,
ONLY 99p

PERFECT FOR
BIRTHDAYS,
OR MESSAGES
OF ANY KIND -

SEND ONE TO
A VILLA FAN
TODAY!

Blues information

**DON'T FORGET TO KEEP TABS
ON WHAT'S HAPPENING AT
ST. ANDREWS BY RINGING THE
BLUES CLUBCALL ON**

.....
0891 12 11 88
.....

**THIS IS THE NEW OFFICIAL
INFORMATION LINE NUMBER,
GIVING YOU ALL THE
UP-TO-DATE NEWS & VIEWS
FROM ST. ANDREWS.**

*** MATCH REPORTS
* INTERVIEWS**

**OR CALL OUR TICKET INFORMATION AND
COMPETITION LINE ON**

.....
0891 332 988
.....

Calls cost 36p/min cheap rate and 48p/min all other times. If you do not pay the phone bills, please get the permission of the person who does before you phone.

DATE	OPPONENTS	ATT.	RES	PTS	POS	1	2	3	4	5	6	7
AUG												
16	NOTTS COUNTY	10,614	1-0	3	8	Gosney	Clarkson	Frain	Rennie	Rogers	Mardon	DONOWA
18	Exeter C.-C.C. Cup 1 (1) *	3,030	0-0	-	-	Gosney	Clarkson	Frain	Rennie	Rogers	Rogers	DONOWA
22	Cambridge United	5,015	3-0	6	5	Gosney	Clarkson	Frain	RENIE (2)*	Rogers	Mardon	DONOWA
25	EXETER C.-C.C. CUP 1 (2) *	5,715	1-4	-	-	Gosney	Clarkson	Frain	Peer*	Rogers	Mardon	Donowa
30	GRIMSBY TOWN	6,807	2-1	9	5	Gosney	Clarkson	Frain	Cooper	Rogers	Mardon	Donowa
SEP												
1	SOUTHEND UNITED	8,324	2-0	12	3	Gosney	Clarkson	Frain	Cooper	Rogers	Matthewson	Donowa
5	Portsmouth	12,152	0-4	12	4	Gosney	Clarkson*	Frain	Cooper	Rogers	Matthewson	Donowa
12	Millwall	8,581	0-0	13	4	Gosney	Clarkson	Frain	Hicks	Rogers	Matthewson	Donowa
15	Sunderland. A.I. Cup	5,871	1-0	-	-	Gosney	Clarkson	Frain	Hicks	Rogers	Matthewson	Donowa
19	Luton Town	8,481	1-1	14	4	Gosney	Clarkson	Frain	Hicks	Rogers	Matthewson	Donowa
27	WOLVERHAMPTON W.	14,391	0-4	14	6	Gosney*	Clarkson	Frain	Peer	Rogers	Matthewson	Donowa
29	CAMBRIDGE. A.I. Cup	3,102	3-3	-	-	Thomas	Clarkson	FRAIN	Matthewson	Hicks	Rodgers	Rodgerson
OCT												
3	Oxford United	7,096	0-0	15	8	Sealey	Clarkson	Frain	Matthewson	Rogers	Hicks	Rodgerson
10	LEICESTER CITY	14,443	0-2	15	8	Sealey	Clarkson	Frain	Matthewson	Rogers	Hicks	Rodgerson
17	Tranmere Rovers	7,901	0-4	15	12	Sealey	Holmes	Frain	Matthewson	Rogers	Hicks	Rodgerson
24	BRISTOL ROVERS	9,876	2-1	18	11	Sealey	Holmes	FRAIN (P)	Rennie	Hicks	MATTHEWSON	Rodgerson
NOV												
1	Charlton Athletic	4,445	0-0	19	10	Sealey	Holmes	Potter	Rennie	Hicks	Matthewson	Rodgerson
4	NEWCASTLE UNITED	14,376	2-3	19	14	Sealey	Holmes	Frain	Rennie*	Hicks	Matthewson	Rodgerson
7	Bristol City	10,008	0-3	19	17	Sealey	Clarkson	Frain	Donowa	Hicks	Matthewson	Rodgerson
11	BARI (A.I. Cup)	4,970	1-0	-	-	Sealey	Tait*	Potter	Rogers	Frain	Matthewson	Rodgerson
14	Reading (FA Cup 1)	7,667	0-1	-	-	Thomas	Holmes	Potter*	Cooper	Hicks	Matthewson	Rodgerson
21	Barnsley	5,603	0-1	19	18	Sealey	Holmes	Potter	Tait	Hicks*	Matthewson	Rodgerson
28	West Ham United	15,004	1-3	19	19	Sealey	Holmes*	Potter	Tait	Rogers	Matthewson	RODGERSON
DEC												
2	Cesena (A.I. Cup)	2,090	2-1	-	-	Thomas	Clarkson	Potter	Tait	FRAIN	Rogers	Wooltham*
5	BRENTFORD	8,582	1-3	19	20	Sealey	Peer	Potter	Fenwick	FRAIN	Rogers	Rodgerson
8	ASCOLI (A.I. Cup)	3,963	1-1	-	-	Sealey	Clarkson	Potter	Fenwick	Frain	Matthewson	Rodgerson
12	Derby County	16,662	1-3	19	22	Sealey	Clarkson	Potter	Fenwick*	Frain	Matthewson	Rodgerson
16	Lucchese (A.I. Cup)	139	0-3	-	-	Sealey	Clarkson	Potter	Rennie	Hicks	Matthewson	Rodgerson
19	WATFORD	7,182	2-2	20	20	Sealey	Clarkson	Potter	Rennie	Hicks	Matthewson	Rodgerson
JAN												
9	LUTON TOWN	9,601	2-1	23	19	Gosney	Clarkson	Potter	Fitzpatrick	Hicks	Matthewson	Peschisoldo
12	Swindon Town	14,398	0-0	24	19	Gosney	Clarkson	Potter	Fitzpatrick	Hicks	Matthewson	Peschisoldo
17	Wolverhampton Wndrs	13,560	1-2	24	20	Gosney	Clarkson	Potter	Fitzpatrick	Hicks	Matthewson	Rennie*
22	PETERBOROUGH UTD	10,277	2-0	27	19	Gosney	Clarkson	Potter	Fitzpatrick	Hicks	Matthewson	Rennie
27	Southend United	4,065	0-4	27	19	Gosney	Clarkson	Potter	Fitzpatrick	Hicks	Matthewson	Rennie
30	CAMBRIDGE UNITED	9,425	0-2	27	20	Gosney	Clarkson	Potter	Fitzpatrick	Mardon	Matthewson	Sale
FEB												
6	Notts County	8,550	1-3	27	22	Gosney	Clarkson	POTTER	Fitzpatrick*	Mardon	Matthewson	Sale
9	MILLWALL	8,504	0-0	28	22	Gosney	Holmes	Potter	Rennie	Mardon	Matthewson	Sturridge
13	PORTSMOUTH	10,935	2-3	28	22	Gosney	Holmes	Potter	Rennie	Mardon	Matthewson	STURRIDGE
20	Grimsby Town	5,237	1-1	29	24	Gosney	Holmes	Frain	Rennie*	Mardon	Matthewson	Wooltham
28	Leicester City	10,284	1-2	29	24	Thomas*	Holmes	Frain	Fenwick	Mardon	MATTHEWSON	Donovia
MAR												
6	OXFORD UTD	11,104	1-0	32	22	Catlin	Holmes	Frain	Peer	Mardon	Matthewson	Rodgerson
9	Peterborough United	7,600	1-2	32	23	Catlin	Holmes	Frain	Peer	Mardon	Matthewson	Rodgerson
13	BRISTOL CITY	15,611	0-1	32	23	Catlin	Hiley	Frain	Parris	Mardon	Matthewson	Moulden
16	SUNDERLAND	10,934	1-0	35	23	Catlin	Hiley	Frain	Parris	Mardon	Matthewson	Moulden
20	Brentford	7,534	2-0	38	21	Catlin	Hiley	Frain	Parris	Mardon	Matthewson	Moulden*
23	BARNSLEY	12,664	3-0	41	18	Catlin	Hiley	Frain	Parris	Dryden	Matthewson	MOULDEN*
28	Newcastle United	27,087	2-2	42	20	Catlin	Hiley	Frain	Parris	Dryden	Matthewson	Moulden
APR												
3	WEST HAM UNITED	19,053	1-2	42	21	Catlin	Clarkson	Frain	Parris	Dryden	Matthewson	Moulden*
6	DERBY COUNTY	15,424	1-1	43	22	Gosney	Scott	Frain	Parris	Dryden	Mardon*	MOULDEN
10	Sunderland											
12	SWINDON TOWN											
17	Watford											
24	TRANMERE ROVERS											
MAY												
1	Bristol Rovers											
8	CHARLTON ATHLETIC											

These Fixtures are the Copyright of the Football League Ltd and are not to be reproduced without permission.

RESERVES APPEARANCES & GOALS

Name	App	Goals
Carl Adams	17(1)	4
Ian Clarkson	12	1
Louie Donowa	8	13
Paul Fenwick	10	-
Matthew Fox	14(6)	1
David Foy	20(2)	2
John Gayle	4	1
Martin Hicks	7	-
Paul Holmes	5	-
Paul Mardon	3	-
Trevor Matthewson	3	1
Jamie Morley	3(2)	-
Alan O'Neill	24(1)	-
Dean Peer	15	5
Paul Peschisoldo	4(1)	2
Graham Potter	15	-
James Quinn	6(3)	3
David Rennie	6	-
Steve Robinson	7(6)	-
Ian Rodgerson	5	1
Darren Rogers	18	1
Darran Rowbotham	12	6
Mark Sale	7	3
Richard Scott	6(2)	-
Richard Steadman	8	-
Simon Sturridge	10	9
Martin Thomas	18	-

Also appeared: (app:goals) D. Aston (1(2):2); I. Atkins (12:6); L. Baker (1:0); J. Beckford (1:0); B. Bobunski (1:0); B. Caswell (0(1):0); P. Chaliner (1:0); M. Cooper (9:1); P. Fitzpatrick (3:2); G. Fowkes (3(2):1); A. Gosney (4:0); E. Hogan (10:2); R. Knight (2:0); P. Jones (2:0); P. Keane (3:0); S. McKeever (3(1):0); P. Middlemass (2(1):0); G. Obebo (1:0); A. Porich (2:0); S. Prince (2:1); P. Tait (3:1); A. Wardle (1:0); A. Wratten (5(2):0)

YOUTHS - APPEARANCES & GOALS (League & Cup)

Name	App	Goals
David Aston	35	20
John Bass	24(2)	4
Simon Black	19(10)	10
Robert Bloxham	-(1)	1
J. Bunch	1	-
Paul Chaliner	11(3)	1
Graeme Fowkes	33(1)	1
Mick Greenwood	2	-
Jay Lucas	6(8)	-
Scott McKeever	25(2)	4
Jamie Morley	29	1
Graham Potter	14	-
Simon Prince	3(2)	-
James Quinn	27	30
S. Rea	2	-
Steve Robinson	31(2)	8
Richard Scott	35	3
Ben Sedgemoor	20(5)	6
Richard Steadman	33	-
Adam Wratten	35	1

6	7	8	9	10	11	12	14
Mardon Rogers Mardon Mardon ●	DONOWA Donowa DONOWA Donowa Donowa	Tait Tait Tait Tait	Sale Sale* SALE Sale*	Gleghorn Gleghorn Gleghorn GLEGHORN	Sturridge* Sturridge Sturridge Bedford	Peer Peer Rodderson Hicks Hicks ●	Rodderson* Rodderson* Hicks* Rowbotham* ROWBOTHAM*
Matthewson Matthewson Matthewson Matthewson Matthewson Rogers	Donowa Donowa Donowa Donowa Donowa Rodderson	TAIT Tait Tait Tait Tait ● Tait ●	Sale Sale SALE Sale Sturridge Donowa	Gleghorn Gleghorn Gleghorn Gleghorn GLEGHORN	BECKFORD Beckford Rowbotham ROWBOTHAM* Rowbotham* Sturridge*	Hicks Mardon* Cooper Cooper Cooper ● SALE ●	Rowbotham Rowbotham ● Sturridge Sturridge* Rodderson* Rowbotham*
Hicks Hicks Hicks MATTHEWS ●	Rodderson Rodderson Rodderson	Tait Tait* Rennie Gayle	Donowa* Rowbotham ● Donowa Donowa	Gleghorn Gleghorn Gleghorn Speedie	Rowbotham Donowa Rowbotham* Rowbotham	Rennie Sale* Gayle* Peer	Sale* Rennie* Peer Clarison
Matthewson Matthewson Matthewson Matthewson Matthewson Matthewson	Rodderson Rodderson Rodderson Rodderson Rodderson RODGERSON	Sturridge* Tait Tait Gayle ● Gayle Gayle	Speedie SPEEDIE Speedie Speedie Frai Speedie Speedie	Rowbotham Sturridge ● COOPER Tait Sturridge ● Frai	Donowa ● POTTER ● Rowbotham Sturridge Sturridge Frai Donowa	Cooper* Rowbotham* Potter* Donowa* Rogers* Peschosolido ● Sturridge*	Clarkson ● Donowa ● Cooper ● Peschosolido ● 15 Peschosolido ● Rogers* Peschosolido
Rogers Rogers Matthewson Matthewson Matthewson Matthewson	Rowbotham* Rodderson Rodderson Rodderson Rodderson	Gayle Tait Tait Gayle Gayle Gayle	STURRIDGE Speedie Speedie SPEEDIE Rowbotham Speedie	Sale Donowa Sale* Tait Tait Tait*	Rodderson Sturridge* STURRIDGE Rennie Peschosolido* FRAIN	Peer* Sale* Donowa* Sturridge ● PESCHISOLIDO	Foy Peschosolido* Rogers ●
Matthewson Matthewson Matthewson Matthewson Matthewson Matthewson	Peschosolido Gayle Rennie* Rennie Rennie Sale	GAYLE Gayle Gayle GAYLE Mardon Sturridge	Speedie* Rennie Peschosolido Peschosolido Peschosolido* Peschosolido	Tait Tait Tait FRAIN (P) FRAIN (P) FRAIN FRAIN	FRAIN (P) Frai Frai FRAIN (P) Frai Frai	Sturridge* Sturridge Fenwick Mardon Mardon Rennie ●	Rennie ● Speedie Quinn* Quinn Quinn* Rodderson*
Matthewson Matthewson Matthewson Matthewson MATTHEWS ●	Sale Sturridge ● STURRIDGE Rowbotham ● Donowa	Sturridge Gayle* Quinn* GAYLE Gayle	Peschosolido* Peschosolido PESCHISOLIDO Peschosolido Peschosolido	Tait Tait Tait Foy Foy Foy	Frai Frai Frai Donowa Donowa Sturridge ●	Rennie Sale ● Sale* Fenwick* Rogerson*	Rowbotham* Fenwick* Fenwick ● Quinn ● Rogers ●
Matthewson Matthewson Matthewson Matthewson Matthewson Matthewson	Rodderson Rodderson Moulden Moulden Moulden* MOULDEN MOULDEN	Gayle Gayle Gayle Gayle* Rodderson RODGERSON	PESCHISOLIDO ● Peschosolido PESCHISOLIDO PESCHISOLIDO (2) SAVILLE (2) SAVILLE	Tait Tait Tait Peer* Peer ● Peer	Sturridge ● Sturridge* Smith Smith Smith Smith	Donowa ● Donowa* Rodderson* Rodderson* Clarkson* Clarkson Mardon	Fenwick* Fenwick ● Fenwick ● Fenwick ● Sturridge Tait
Matthewson Mardon*	Moulden* MOULDEN	Rodderson Rodderson	SAVILLE Saville	Peer Rogers	Smith Smith	Mardon Quinn	Sturridge* Potter*

BARCLAYS LEAGUE DIVISION 1

	Home					Away					Pts	
	P	W	D	L	F	A	W	D	L	F		A
Newcastle U.	39	12	6	1	42	13	11	3	6	30	21	78
Portsmouth	40	16	2	2	41	8	5	8	7	28	32	73
West Ham U.	39	12	5	2	39	16	9	5	6	28	20	73
Swindon Town	40	14	4	2	38	19	5	7	8	26	30	68
Millwall	40	13	5	1	44	16	4	10	7	18	26	66
Leicester City	38	11	4	4	34	22	8	4	7	26	26	65
Tranmere Rvs	39	12	4	4	42	21	7	3	9	21	31	64
Grimsby Town	40	11	6	4	32	23	6	1	12	21	27	58
Charlton Ath	40	9	8	4	26	17	5	5	9	18	23	55
Wolves	39	9	6	5	33	23	5	6	8	19	24	54
Barnsley	39	10	4	5	24	15	5	5	10	25	30	54
Derby County	38	7	1	10	30	29	8	6	6	27	19	52
Peterborough	39	5	9	5	24	24	8	2	10	23	35	50
Watford	40	6	6	7	25	29	6	5	10	28	38	47
Bristol City	39	8	5	6	24	24	4	5	11	19	39	46
Sunderland	39	8	5	7	27	23	4	5	10	14	28	46
Brentford	40	6	5	10	23	27	6	4	9	21	31	45
Luton Town	39	5	11	4	23	25	4	6	9	18	30	44
Notts County	39	8	6	5	27	18	2	7	11	19	44	43
Oxford Utd	38	6	6	7	24	18	4	7	8	20	31	43
Cambridge U	40	7	5	9	25	30	3	8	8	18	33	43
Birmingham.	40	9	3	8	24	29	2	7	11	15	35	43
Southend Utd	38	5	8	6	26	21	4	4	11	18	32	39
Bristol Rvs	40	6	4	10	25	36	3	5	12	21	40	36

FIRST TEAM APPEARANCES & GOALS

	League		Cup		Total	
	App	Goals	App	Goals	App	Goals
Jason Beckford	3	1	-	-	3	1
Bob Catlin	8	-	-	-	8	-
Mark Cooper	3(3)	-	2	1	5(3)	1
Ian Clarkson	21(2)	-	7	-	28(2)	-
Louie Donowa	18(3)	2	4(2)	-	22(5)	2
Richard Dryden	5	-	-	-	5	-
Paul Fenwick	3(7)	-	1	-	4(7)	-
Paul Fitzpatrick	7	-	-	-	7	-
David Foy	3	-	-	-	3	-
John Frain	39	5	8	2	47	7
John Gayle	16(1)	3	4	-	20(1)	3
Nigel Gleghorn	11	1	4	1	15	2
Andy Gosney	19	-	3	-	22	-
Scott Hiley	5	-	-	-	5	-
Martin Hicks	16(2)	-	4	-	20(2)	-
Paul Holmes	12	-	1	-	13	-
Paul Mardon	15(1)	-	2	-	17(1)	-
Trevor Matthewson	35	2	6	-	41	2
Paul Moulden	7	2	-	-	7	2
George Parris	7	-	-	-	7	-
Dean Peer	9	-	1(1)	-	10(1)	-
Paul Peschosolido	16(3)	7	1(2)	-	17(5)	7
Graham Potter	16(1)	2	5	-	21(1)	2
James Quinn	1(3)	-	-	1	(3)	-
David Rennie	15(3)	2	2	-	17(3)	2
Ian Rodderson	19(6)	2	7(1)	-	26(7)	2
Darren Rogers	14(3)	-	6(1)	-	20(4)	-
Darran Rowbotham	9(4)	2	4(1)	-	13(5)	2
Mark Sale	9(6)	-	5(1)	3	14(7)	3
Andy Saville	4	4	-	-	4	4
Richard Scott	1	-	-	-	1	-
Les Sealey	12	-	3	-	15	-
Dave Smith	7	-	-	-	7	-
David Speedie	10	2	2	-	12	2
Simon Sturridge	16(5)	1	5	2	21(5)	3
Paul Tait	28	2	9	-	37	2
Martin Thomas	1	-	3	-	4	-

NEXT MATCH AT ST. ANDREWS

SATURDAY 24th APRIL 1993
BARCLAYS LEAGUE DIVISION 1
BIRMINGHAM CITY v
TRANMERE ROVERS
KICK-OFF 3.00P.M.

AND COMING SOON
SATURDAY 8th MAY 1993
BARCLAYS LEAGUE DIVISION 1
BIRMINGHAM CITY v
CHARLTON ATHLETIC
KICK-OFF 3.00P.M.

WHAT ABOUT THAT THEN HARRY?



Frank Bruno presents Harry Farley, Chairman of the Sutton Coldfield branch of the Imperial Cancer Research Fund, with a cheque for £1,533.53 for the Bobby Moore Appeal Fund, the money raised by Blues fans through sales of the programme for our match against Sunderland in March.